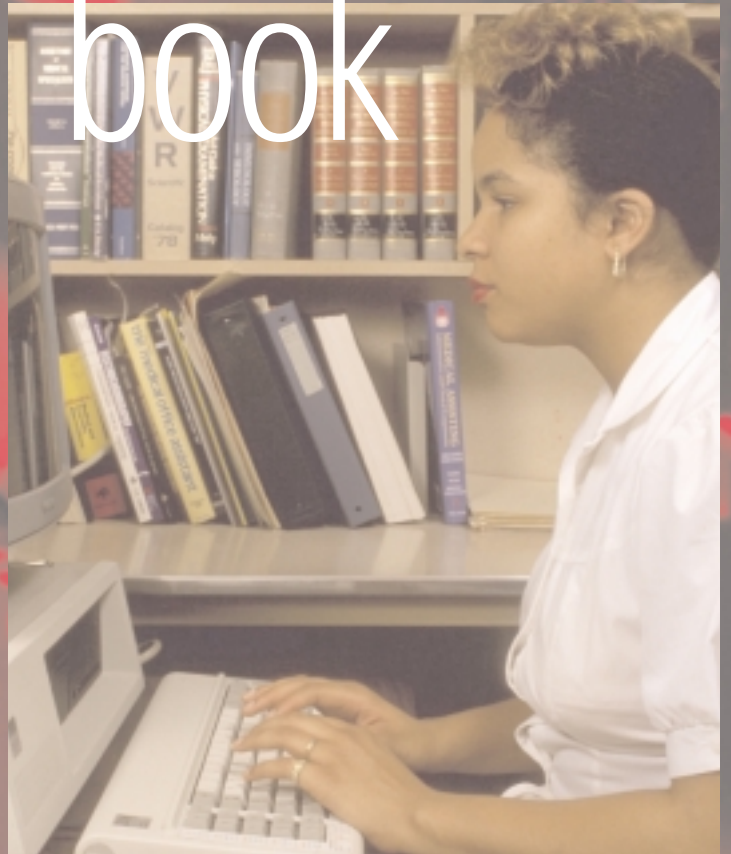


reference  
book



**INDIANA  
UNIVERSITY  
SOUTHEAST**

*Excellence Close to Home*

---

**INDIANA UNIVERSITY SOUTHEAST**

**REFERENCE BOOK**

**2000-2001**

*This book was compiled and prepared for publication by the Chancellor's Office and the Office of Institutional Research*

---

## TABLE OF CONTENTS

---

Title	Page
Academic Division—Faculty & Librarians	9-15
Administrative Committees	32-33
Administrative Departments—Staff	3-8
Administrative Officers	1
Administrative Organization Chart	2
Approved Degree Programs	22-23
Balance Sheet—General Fund	27
Board of Advisors	34-37
Degrees Awarded	24
Faculty and Professional Staff by Discipline—Summary	17
Faculty Senate	29
Faculty Senate Committees	30-31
Operating Expenditures by Function—General Fund	26
Operating Income & Expenditures	25
Personnel Summary	16
Physical Facilities	28
Students Characteristics	20-21
Student Credit Hour History	19
Student Enrollment History	18
Trustees of Indiana University	38-39

---

## **INDIANA UNIVERSITY SOUTHEAST ADMINISTRATIVE OFFICERS**

F. C. Richardson, Ph.D., Chancellor

James E. Stammerman, M.S., Executive Assistant to the Chancellor

Jacqueline C. Love, M.S., Director of Equity and Diversity

Gilbert W. Atnip, Ph.D., Vice Chancellor for Academic Affairs

Marcia T. Segal, Ph.D., Associate Vice Chancellor for Academic Affairs and Dean  
for Research

Uric B. Dufrene, Ph.D., Dean of the School of Business

Steven W. Gilbert, Ph.D., Dean of the School of Education

Joanna Goldstein, Ph.D., Dean of the School of Arts & Letters

Galen A. Renwick, Ph.D., Dean of the School of Natural Sciences

Clifford L. Staten, Ph.D., Dean of the School of Social Sciences

Lillian E. Yeager, Ph.D., Interim Dean, Indiana University Southeast and  
Interim Assistant Dean, School of Nursing

Richard Kopp, M.S., Purdue Programs Site Administrator

Saundra E. Brown, M.S., Manager of Continuing Studies Credit Programs

Christy A. Harper, A.S., Manager of Continuing Studies Non-Credit Programs

Mary Anne Baker, Ph.D., Director of Institutional Research

C. Martin Rosen, M.S., Director of Library Services

Thomas A. Prebys, M.S., Registrar

J. Douglas Denton, M.A., Coordinator of Student Development Center

Joelyn K. Ainley, Ph.D., Vice Chancellor for Student Affairs

David B. Campbell, M.S., Director of Admissions

Sheryl L. Haehl, Ph.D., Director of University Division

June J. Huggins, M.S., Coordinator, Center for Mentoring & Student Outreach

Jodi E. James, M.A., Coordinator of Services for Students w/Disabilities

James A. Kanning, M.S.B.A., Director of Career Services & Placement

Patrick A. Mrozowski, Ed.S., Director of Student Financial Assistance

Ernest L. Neal, M. A., Director of Athletics

Director of Campus Life

Mark P. Mixner, M.S., Vice Chancellor for Administrative Affairs

Carol H. Bauer, B.A., Director of Accounting Services

Dennis W. Cottingham, B.S., Director of Campus Services & Purchasing Agent

Edward E. Frederick, M.A., Director of Physical Plant

Ann B. Lee, M.A., Director of Human Resources

Philip A. McBride, B.S., Chief of Safety and Security

Juanita K. Schickel, Bookstore Manager

David F. Fleming, J.D., Interim Vice Chancellor for External Affairs

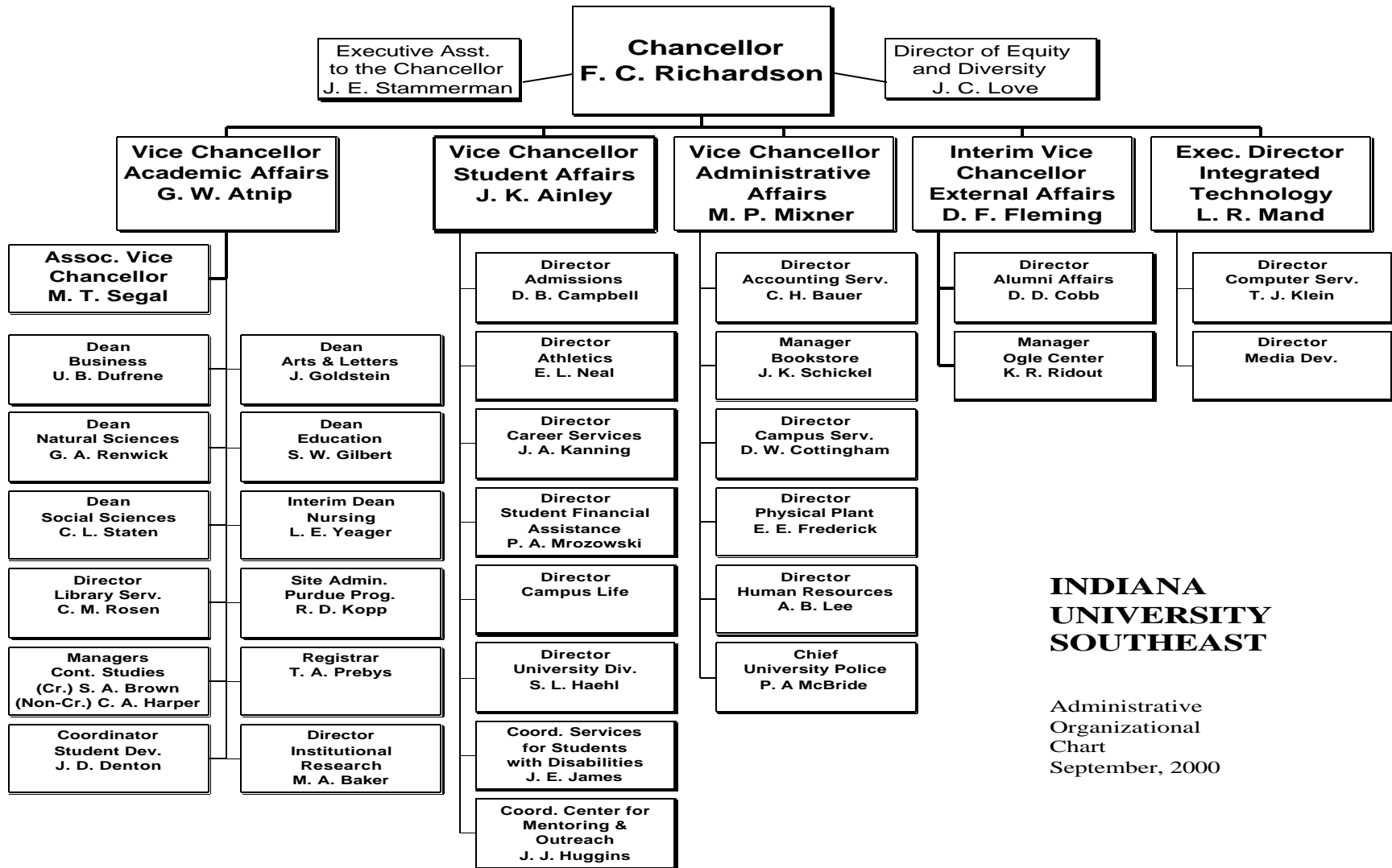
David D. Cobb, J.D., Director of Alumni Affairs

Kyle R. Ridout, B.A., Manager of the Paul W. Ogle Cultural & Community Center

Lawrence R. Mand, Ph.D., Executive Director of Integrated Technology

Thomas J. Klein, M.S., Director of Computer Services

Director of Media Development



**INDIANA  
UNIVERSITY  
SOUTHEAST**

Administrative  
Organizational  
Chart  
September, 2000

---

**ADMINISTRATIVE DEPARTMENTS--STAFF**

---

<b>Name</b>	<b>Title</b>	<b>Rank</b>
<b>ACADEMIC AFFAIRS</b>		
Andrews, Teresa A.	Administrative Secretary	CL0H
Hoffmeister, Teresa	Executive Secretary	CL0J
<b>ACCOUNTING SERVICES</b>		
Bauer, Carol H.	Director of Accounting Services	PA16
Baumeier, Dorothy L.	Assistant Student Services Rep.	CL0E
Kaiser, Ruth Ann	Senior Accounting Assistant	CL0H
Kerstiens, Michael J.	Accountant	PA14
Middleton, Carolyn R.	Student Services Representative	CL0F
Pfeiffer, Sherry Lynn	Assistant Student Services Rep.	CL0E
Stevenson, Cynthia F.	Purchasing Accounting Clerk	CL0F
Wilson, Mary Gilmore	Bursar	PA14
<b>ADMINISTRATIVE AFFAIRS</b>		
Mixner, Mark P.	Vice Chancellor for Administrative Affairs	PA22
Sylvester, Paula K.	Senior Administrative Secretary	CL0I
<b>ADMISSIONS</b>		
Campbell, David B..	Director of Admissions	PA18
Beam, Mary Lee	Application Processor	CL0F
Carter, Juanita T.	Credentials Analyst	CL0I
Hart, June C.	Student Services Assistant	CL0H
Kerr, Karen M.	Admissions Assistant	CL0F
Pelle, Kimberly Dawn	Admissions Counselor	PA10
Turner, Michelle	Counselor/Coordinator Minority Student Recruitment	PA11
Weber, Heidi A.	Assistant Director	PA14
Wild, Mary Ann	Database Coordinator	CL0F
<b>ADULT STUDENT CENTER</b>		
James, Linda L.	Records Specialist	CL0G
<b>APPLIED RESEARCH</b>		
NeSmith, Deborah Ann	Records Information Specialist	CL0H
<b>ARTS AND LETTERS</b>		
Crecelius, Juli E.	Administrative Secretary	CL0H
Haas, Sabrina N.	Secretary	CL0F
Jackson, Walton S.	Coordinator of Writing Center	PA11
Rainbolt, Sharon Lynn	Records Assistant	CL0F
Swords-Simms, Dodie D.	Senior Office Service Asst.	CL0H
<b>ATHLETICS</b>		
Neal, Ernest L.	Director of Athletics	PA16
Corbean, Walter	Head Basketball Coach & Instructor	PA12
Farris, Robin Allan	Coordinator of Women's Sports	PA12
Harvey, Donna Jean	Administrative Secretary	CL0H

Parr, Richard A.	Coordinator of Intramural Sports& Coach	PA11
<b>BOOKSTORE</b>		
Schickel, Juanita K.	Bookstore Manager	PA14
Biesel, Claudia F.	Assistant	CL0G
Carroll, Evelyn L.	Senior Purchasing Assistant	CL0G
Hall, Mary A.	Assistant	CL0C
Howard, Carla L.	Assistant	CL0C
Meyer, Dorothy L.	Purchasing Assistant	CL0F
Pastor, Marion L.	Accounting Clerk	CL0D
Peterson, Curtis B.	Technical Support Assistant	TE0G

**BUSINESS**

Brown, H. Nadine	Records Specialist	CL0G
Flowers, Rebecca A.	Office Service Assistant	CL0F
Garza, Lydia L.	Administrative Secretary	CL0H
Morgan, Mary Lou	Secretary	CLOF
Schlageter, Kimberly L.	Clerical Assistant	CL0D
Swartz, Brenda Kimmey	Coordinator REDRC	PA14
Zurschmeide, Charles Preston	Special Projects Coordinator	PA11

**CAMPUS ACTIVITIES OFFICE**

Vacant	Director of Campus Activities	
Asberry, Pamela R.	Senior Office Service Asst.	CL0H
Christiansen, Marilyn J.	Clerical Assistant	CL0D
Dworsky, Deborah B.	Acting Director	PA11
Griffin, Robert M.	Set Up Coordinator	SM0K
Hartman, Vickie S.	Associate Director	PA11
Robertson, Lesley Ruth	Catering & Food Services	PA09

**CAMPUS SERVICES**

Cottingham, Dennis W.	Director of Campus Services	PA15
Delk, Sandra J.	Purchasing Representative	CL0F
Kochert, Carl E.	Purchasing Representative	CL0F
Logsdon, Gladys M.	Coordinator of Printing and Duplicating	PA11
Loney, Lou Jane	Office Service Assistant	CL0F
Oliver, Jimmie G.	Receiving Delivery Specialist	SM0L
Schott, Richard T.	Receiving Delivery Specialist	SM0L

**CAREER SERVICES AND PLACEMENT**

Kanning, James A.	Director of Career Services and Placement	PB15
Denton, Catherine A.	Senior Office Service Asst.	CL0H
Hatfield, Mary J.	Coordinator of Career Programs	PA11
Mc Cance, R. Gaye	Senior Office Service Asst.	CL0H
Ostertag, Elizabeth Korfhage	Intern Coordinator	PA11

**CENTER FOR MENTORING AND STUDENT OUTREACH**

Huggins, June J.	Coordinator for Mentoring and Student Outreach	PA12
Buskirk, Michelle L.	Office Service Assistant	CL0F

**CHANCELLOR**

McCartin, Rita Jo	Executive Secretary	CL0J
-------------------	---------------------	------

Stammerman, James E.	Executive Asst. to Chancellor	PA17
<b>CHILD CARE CENTER</b>		
Lawhorn, Wanda Marie	Coordinator of Child Care Center	PA12
Brackens, Tina	Evening Manager	SMOI
Yankey, Jennifer D.	Day Assistant	SM0H

**COMPUTER SERVICES**

Klein, Thomas J.	Director of Computer Services	PA18
Roberts, Edward	Technical Network Systems Operation	TE0I
Boyer, Richard L.	Coordinator of Computer Network Services	TE0K
Brown, Wayne	Asst. Director of Computer Training	PA14
Bush, Russell D.	Coordinator of Student Computer Services	PA11
Clark, Steven C.	Help Desk Technician	TE0H
Gelwick, Barbara L.	Internet Service Specialist	TE0J
Hayes, Cynthia J.	Senior Office Service Assistant	CL0H
Klaphaak, Kirk W.	Asst. Director of Instruction and Research	PA14
Mendick, Michael Milton	Microcomputer Technician	TE0H
Neville, James Robert	Help Desk Technician	TE0H
Petrysian, John	Coordinator of Network Services	PA14
Rainbolt, Ruby E.	Coordinator of Student	TE0J
Rose, Wesley A.	Coordinator of Computer Network Services	TE0K
Wang, Pingsha	Programmer Analyst	PA11

**CONTINUING STUDIES**

Brown, Sandra E.	Manager of Continuing Student Credit	PA12
Harper, Christy A.	Manager of Continuing Student Non-Credit	PA12
Bennett, Lee Ann	Senior Office Service Assistant	CL0H
Haskins, Linda Jo	Administrative Secretary	CL0H
Kuwabara, Keiko	Coordinator Japanese Center	PA12

**DISABLED STUDENT OFFICE**

James, Jodi E.	Coordinator of Disable Student Services	PA12
----------------	---	------

**EDUCATION**

Burke, Sharon P.	Senior Office Service Assistant	CL0H
Riehl, Jane E.	Coordinator of Elementary Education	PA12
Risico, Judith L.	Records Information Specialists	CL0H
Schenatzki, Susan C.	Office Service Assistant	CL0F
Shingleton, Linda K.	Administrative Secretary	CL0H

**EQUITY AND DIVERSITY**

Love, Jacqueline C.	Director of Equity & Diversity	PA17
Vacant	Secretary	

**EXTERNAL AFFAIRS**

Fleming, David F.	Interim Vice Chancellor for External Affairs	PA21
Barker, Judith A.	Senior Administrative Secretary	CL0I
Cobb, David D.	Director of Alumni Affairs	PA14
Gasaway, Mary J.	University Community Liaison	CL0G
Rasmussen, Linda Jane	Office Service Assistant	CL0F
Rogers, Vicki L.	Marketing Assistant	PA13

Sears, Katherine L.	Public Information Specialist	PA12
---------------------	-------------------------------	------

**HUMAN RESOURCES**

Lee, Ann B.	Director of Human Resources	PA17
Cooper, Janet E.	Benefits Specialist	CLOJ
Miller, Katrina E.	Payroll Assistant	CLOG
Pennington, Michelle E.	Assistant Secretary	CLOG
Pepper, Jean A.	Payroll Assistant	CLOK
Williams, Linda R.	Human Resources Assistant	CLOG

**INSTITUTE FOR LEARNING AND TEACHING EXCELLENCE**

Rainbolt, David	Coordinator of Instruction Lab.	PA12
-----------------	---------------------------------	------

**INSTITUTIONAL RESEARCH**

Bulleit, Deborah A.	Coordinator of Institutional Data Systems	PA13
---------------------	---	------

**LIBRARY**

Callahan, Brenda P.	Library Technician	CLOF
Cook, Martha A.	Senior Library Assistant	CLOF
Greenwell, Peggy A.	Senior Library Assistant	CLOF
King, Robin A.	Senior Library Technician	CLOH
Mayfield, Brenda S.	Senior Library Technician	CLOH
McMahan, Elizabeth C.	Library Catalogue Specialist	CLOI
Nachand, Phyllis E.	Senior Library Technician	CLOH
Rickert, John R.	Senior Library Assistant	CLOF
Smith, Rebekah M.	Library Technical Support	TE0H
Stoner, Phyllis A.	Administrative Secretary	CLOH

**MAILING SERVICES**

Morris, H. Roger	Receiving Delivery Specialist	SM0L
------------------	-------------------------------	------

**MEDIA SERVICES**

Vacant	Director of Media Development	
Jackson, Larry R.	Electrical Specialist	TE0L
Moore, Robert J.	Help Desk Technician	TE0H
Trusner, Douglas E.	Help Desk Technician	TE0H
Winslow, Vaughn E.	Coordinator of Media Services	PA11

**NATURAL SCIENCES**

Adams, Barbara A.	Secretary	CLOF
Emmert, Gail E.	Academic Lab. Coordinator	TE0E
Norman, Jon C.	Lab. Service Coordinator	TE0I
Shepherd, Christie D.	Clerical Assistant	CLOD
Stanley, Alicia L.	Administrative Secretary	CLOH

**NURSING**

Finley, Berba D.	Administrative Secretary	CLOH
Norvell, Kathleen M.	Secretary	CLOF

**PHYSICAL PLANT**

Frederick, Edward E.	Director of Physical Plant	PA18
----------------------	----------------------------	------

Asberry, Samuel C.	Asst. Director of Maintenance Supervision	PA15
Baylor, Jerry Edwin	Maintenance Mechanic	SM0S
Brendle, John E.	Landscape and Grounds	SM0L
Clark, Angela M.	Office Service Assistant	CL0H
Clemons, Gerald L.	Maintenance Mechanic First Class	SM0T
Cocke, Barbara J.	Custodian Training	SM0I
Conder, Herdis Ray	Custodian	SM0I
Copple, Earl W.	Custodial Involvement Assistant	SM0I
Coulter, Deborah A.	Custodian	SM0H
Craig, Donald G.	Day Custodian	SM0H
Curd, James Michael	Carpenter	SM0Q
Dixon, Arlie F.	Day Custodian	SM0H
Draughn, Kim Renee	Day Custodian	SM0H
Friedly, W. Michelle	Custodian	SM0H
Goodwin, B Scott	Landscape and Grounds	SM0L
Harper, L. Kay	Supervisor of Building Service	PA11
Hogan, Elizabeth J.	Day Custodian	SM0H
Kaiser, David R.	Maintenance Mechanic First Class	SM0T
Kessinger, Mark E.	Landscape and Grounds	SM0L
Lord, Jo A.	Day Custodian	SM0H
Molet, Pearline S.	Custodian	SM0H
Moon, Ricky D.	Maintenance Mechanic	SM0S
Ricketts, Bettie Ann	Custodian	SM0H
Schweitzer, Donald L.	Land & Ground Assistant	SM0L
Seelye, Rita J.	Day Custodian	SM0H
Sheckell, William	Day Custodian	SM0H
Shingleton, Robert E.	Day Custodian	SM0H
Waldkoetter, Larry A.	Maintenance Mechanic First Class	SM0T
Walker, Brian J.	Night Custodian	SM0I
Webb, Dorothy Karyn	Custodian	SM0H
Winstead, Cari B.	Landscape and Grounds	SM0N
Wolf, Tina M.	Day Custodian	SM0H

**OGLE CULTURAL AND COMMUNITY CENTER**

Ridout, Kyle R.	Manager of Olge Center	PA15
Beardsley, Rebecca A.	University Community Liaison	CL0G
Moore, John A.	Light & Sound Technician	TE0H
Ogden, Mary Michaelleen	Box Office Supervisors	PA09
Schultz, Brian A.	Custodian	SM0I
Vowels, Peter Thomas	Maintenance Mechanic	SM0S
Wright, Larry J.	Custodian	SM0I

**REGISTRAR**

Prebys, Thomas A.	Registrar	PA17
Forrest, Sandra L.	Records Assistant	CL0F
Jensen, Vickie S.	Records Specialists	CL0G
Peterson, Judith S.	Records Specialist	CL0G
Ruddell, Lisa A.	Registrar's Assistant	CL0G

**SOCIAL SCIENCE**

Braden, Mary Ann	Administrative Secretary	CL0H
------------------	--------------------------	------

Colligan, Brigette R.	Secretary	CL0F
Deal, Lesley J.	Secretary	CL0F

**STUDENT AFFAIRS**

Ainley, Joelyn K.	Vice Chancellor for Student Affairs	PA20
Biggs, Beverly J.	Senior Administrative Secretary	CL0I
Vacant	Enrollment Services Computer Technician	

**STUDENT DEVELOPMENT CENTER**

Denton, J. Douglas	Coordinator of Student Development	PA14
May, Thomas G.	Coordinator of Academic Resources	PA12
McCarty, Regina L.	Office Service Assistant	CL0F
Poff, Linda L.	Senior Office Service Asst.	CL0H

**STUDENT FINANCIAL ASSISTANCE**

Mrozowski, Patrick A.	Director of Student Financial Assistance	PA16
Buehner, Shirley M.	Office Service Assistant	CL0F
Harrington, Carolyn S.	Office Service Assistant	CL0F
Pecoraro, Margaret A.	Student Financial Assistant	PA11
Spencer, Tammy J.	Assoc. Director of Student Financial Assistance	PA13
Walter, Trudy Ann	Student Loan Processor	CL0G

**TELEPHONE SERVICES**

Wilcoxson, Marjorie F.	Coordinator of Telephone Services	CL0F
------------------------	-----------------------------------	------

**UNIVERSITY DIVISION**

Haehl, Sheryl L	Director of University Division	PA15
Kraft, Carolyn Lee	Coordinator of Transfer Students	PA12
Lemons, Nancy J.	Coordinator of Orientation	PA12
Litterst, Becky M.	Records Specialist	CL0G
Loebig, Patricia J	Student Services Assistant	CL0H
Roberts, Gregory	Academic Advisor	PA12
Spitznagel, Jane M.	Academic Advisor	PA12
Wells, Kimberly Roberson	Records Specialist	CL0G

**UNIVERSITY POLICE**

McBride, Philip A.	Chief of Safety	PA15
Borrego, Ruben V.	Police Officer	SM0P
Cotton, Stephen L.	Office Service Assistant	CL0F
Endris, Janie M.	Senior Office Service Assistant	CL0H
Knauer, Carol S.	Police Officer	SM0P
Reynolds, Richard W.	Police Officer First Class/Corporal	SM0S
Rezits, Daniel G.	Police Officer First Class	SM0S
Simon, Dennis O.	Police Officer	SM0P
Wise, Monica S.	Police Officer First Class	SM0S

## ACADEMIC UNITS-FACULTY & LIBRARIANS

Faculty	Position	Full Time Emp Date	Status	Sabbatical
<b>School of Arts and Letters</b>				
Joanna Goldstein	Dean of the School of Arts and Letters/Professor of Music	Aug-82	Tenure Effective 1989	
Anne E. Allen	Associate Professor of Fine Arts/Program Coordinator for Fine Arts	Aug-94	Tenure Effective 2001	
Timothy J. Ambrose	Assistant Professor of Spanish/Program Coordinator for Modern Language	Aug-98	Tenure Decision 2002	
Virginia S. Anderson	Assistant Professor of English	Aug-97	Tenure Decision 2003	
Eugenia E. Badger	Visiting Lecturer in Speech	Aug-00	Visiting	
Mindy E. Badia	Assistant Professor of Spanish	Aug-00	Tenure Decision 2005	
James Barry, Jr.	Professor of Philosophy/Program Coordinator for Philosophy	Aug-88	Tenure Effective 1995	
Bohdan Bochan	Associate Professor of German	Aug-82	Tenure Effective 1987	
Linda K. Brengle	Associate Professor of Theatre/Program Coordinator for Theater	Aug-80	Tenure Effective 1987	
Debra K. Clem	Assistant Professor of Fine Arts	Aug-95	Tenure Decision 2001	
Patrick J. Daly, Jr.	Assistant Professor of English/Co-Program Coordinator for English	Aug-96	Tenure Decision 2002	
J. Shannon Dehn	Visiting Lecturer in English	Aug-00	Visiting	
Millard C. Dunn	Professor of English	Sep-69	Tenure Effective 1973	Spring 2001
Samantha M. Earley	Assistant Professor of English/Co-Program Coordinator for English	Aug-99	Tenure Decision 2005	
Camille F. Garnier	Associate Professor of French	Aug-86	Tenure Effective 1993	
John R. Guenther	Professor of Fine Arts/Fine Arts Gallery Coordinator	Aug-76	Tenure Effective 1981	
John Harvey	Lecturer in English/Co-Program Coordinator for Writing	Aug-97	Non-tenure track	
Brian H. Jones	Professor of Fine Arts	Aug-79	Tenure Effective 1986	
James L. Kauffman	Professor of Speech Communication	Aug-88	Tenure Effective 1996	
Granville King, III	Assistant Professor of Speech Communication/Program Coordinator for Communication	Aug-95	Tenure Decision 2001	
Vijay Krishna	Associate Professor of Speech Communication	Aug-94	Tenure Effective 2001	Fall 2000
Susan G. Mann	Associate Professor of English/Co-Program Coordinator for English	Aug-89	Tenure Effective 1995	
Susan P. Moffett	Professor of Fine Arts/Campus Liaison for FACET	Jan-78	Tenure Effective 1985	
J. Thomas O'Neal	Visiting Lecturer in English	Aug-00	Visiting	
Curtis H. Peters	Professor of Philosophy/Program Coordinator for Religion	Aug-76	Tenure Effective 1982	
Diane S. Reid	Lecturer in Speech/Program Coordinator for Public Speaking and Basic Speech Courses	Aug-81	Non-tenure Track	
C. Teresa Reynolds	Visiting Lecturer in English	Aug-00	Visiting	
William D. Rumsey	Professor of Philosophy	Aug-81	Tenure Effective 1988	
Kurt Sander	Assistant Professor of Music/Program Coordinator for Music	Aug-98	Tenure Decision 2004	

## ACADEMIC UNITS-FACULTY & LIBRARIANS

Faculty	Position	Full Time Emp Date	Status	Sabbatical
L. Grace St. Pierre	Assistant Professor of Music	Aug-00	Tenure Decision 2006	
William E. Sweigart	Associate Professor of English/Co-Program Coordinator for English and Writing	Aug-90	Tenure Effective 1997	
Harry Weger, Jr.	Assistant Professor of Communication	Aug-98	Tenure Decision 2004	
Marilyn C. Whitesell	Assistant Professor of Fine Arts	Aug-99	Tenure Decision 2005	
Trinity D. Williams	Visiting Lecturer in Theatre	Aug-00	Visiting	
Annette Wyandotte	Associate Professor of English	Aug-92	Tenure Effective 1999	
Christa Zorn	Assistant Professor of English	Aug-95	Tenure Decision 2001	
<b>School of Business</b>				
Uric B. Dufrene	Dean of the School of Business/Associate Professor of Business Administration	Aug-92	Tenure Effective 1999	
A. Janardhanan Alse	Associate Professor of Business Administration	Aug-92	Tenure Effective 2000	Spring 2001
James L. Altmann	Professor of Economics and Business Administration	Aug-79	Tenure Effective 1985	
Robert C. Ash	Assistant Professor of Business Administration	Aug-99	Tenure Decision 2003	
Douglas K. Barney	Associate Professor of Business Administration	Aug-93	Tenure Effective 2000	
Eugene T. Beckman, Jr.	Lecturer in Business Administration/Director of MBA Program	Aug-87	Non-tenure track	
Chris Bjornson	Associate Professor of Business	Aug-92	Tenure Effective 2000	
Linda Christiansen	Lecturer in Business Administration	Aug-96	Non-tenure track	
Kathryn W. Ernstberber	Associate Professor of Business Administration/Program Coordinator for Management	Aug-91	Tenure Effective 1999	
Dagney G. Faulk	Associate Professor of Economics	Aug-99	Tenure Decision 2005	
G. Richard French	Associate Professor of Business Administration/Program Coordinator for Accounting and Finance	Aug-87	Tenure Effective 1997	
Miriam L. Griffith	Lecturer in Business Administration	Sep-91	Non-tenure track	
Robert J. Hotopp	Associate Professor of Business Administration	Sep-64	Tenure Effective 1973	
Wayne P. Jones	Visiting Assistant Professor of Business Administration	Aug-00	Visiting	
Donald L. Kalmey	Associate Professor of Business Administration	Aug-98	Tenure Decision 2004	
Thomas J. Keefe	Associate Professor of Business Administration	Jan-89	Tenure Effective 1996	
Eldon L. Little	Professor of Business Administration	Jul-88	Tenure Effective 1988	
Vicki A. Meredith	Professor of Business Administration	Aug-83	Tenure Effective 1992	Year 2000/01
William I. Norton, Jr.	Assistant Professor of Business Administration	Aug-98	Tenure Decision 2004	
Paul H. Pittman	Associate Professor of Business Administration	Aug-92	Tenure Effective 2001	

## ACADEMIC UNITS-FACULTY & LIBRARIANS

Faculty	Position	Full Time Emp Date	Status	Sabbatical
Jonathan A. Rakich	Professor of Management	Aug-99	Tenure Decision 2005	
Gerald D. Ramsey	Associate Professor of Business Administration	Aug-80	Tenure Effective 1984	
D. Eric Schansberg	Professor of Economics/Program Coordinator for Economics	Aug-92	Tenure Effective 1999	
Manuel A. Tiggos	Professor of Accounting	Aug-90	Tenure Effective 1990	
Frank H. Wadsworth	Assistant Professor of Business Administration/Program Coordinator for Marketing	Aug-93	Tenure Decision 2001	
Jerry E. Wheat	Professor of Business Administration	Aug-77	Tenure Effective 1980	Fall 2000
A. Jay White	Assistant Professor of Business Administration	Aug-98	Tenure Decision 2004	
Alan Wong	Associate Professor of Business Administration	Aug-86	Tenure Effective 1993	
<b>School of Education</b>				
Steven W. Gilbert	Dean of the School of Education/Professor of Education		Tenure Effective 1999	
Carolyn A. Babione	Assistant Professor of Education/Program Coordinator for Graduate Education	Aug-98	Tenure Decision 2004	
Kevin Sue Bailey	Professor of Education	Aug-88	Tenure Effective 1995	
A. Christine Bowles	Lecturer in Education	Aug-00	Non-tenure Track	
Carl A. deGraaf	Professor of Education	Aug-82	Tenure Effective 1986	
Teesue H. Fields	Associate Professor of Education/Program Coordinator for Counselor Education	Aug-92	Tenure Effective 1999	Fall 2000
Magdalena Herdoiza-Estevez	Assistant Professor of Education	Aug-00	Tenure Decision 2004	
Nancy E. Hottman	Lecturer in Education	Aug-00	Non-tenure Track	
Kathryn J. C. Jackson	Lecturer in Education	Aug-00	Non-tenure Track	
William D. Jamski	Professor of Education	Aug-76	Tenure Effective 1983	
Patricia A. McNames	Assistant Professor of Education/Program Coordinator for School Administration	Aug-94	Tenure Decision 2001	
L. Lee Morgannett	Professor of Education/Program Coordinator for Secondary Education	(Unc Aug-81	Tenure Effective 1987	
Gloria J. Murray	Associate Professor of Education	Aug-00	Tenure Effective 2000	
Jeanette C. Nunnelley	Associate Professor of Education/Program Coordinator for Elementary Education (Undergraduate)	Jan-93	Tenure Effective 2001	
Susan R. Ridout	Professor of Education	Aug-83	Tenure Effective 1990	
Walter F. Ryan	Assistant Professor of Education	Aug-96	Tenure Decision 2002	
Catherine A. Shea	Professor of Education/Program Coordinator for Special Education	Aug-87	Tenure Effective 1992	

## ACADEMIC UNITS-FACULTY & LIBRARIANS

Faculty	Position	Full Time Emp Date	Status	Sabbatical
Rosemarie Smead	Professor of Education	Aug-81	Tenure Effective 1988	
Frances H. Squires	Associate Professor of Education	Aug-87	Tenure Effective 1994	Spring 2001
Barbara C. Thompson	Assistant Professor of Education	Aug-97	Tenure Decision 2003	
Guy O. Wall	Professor of Education	Aug-95	Tenure Effective 1982	
Stanley K. Whitaker	Lecturer in Education	Aug-98	Non-tenure Track	
<b>School of Natural Sciences</b>				
Galen A. Renwick	Dean of the School of Natural Sciences/Associate Professor of Biology	Sep-69	Tenure Effective 1978	
Janet K. Arnold	Lecturer in Mathematics	Aug-00	Non-tenure Track	
Maria A. Aronne	Lecturer in Mathematics	Aug-93	Non-tenure Track	
Claude D. Baker	Professor of Biology	Aug-76	Tenure Effective 1983	
Crump W. Baker	Professor of Mathematics/Program Coordinator for Mathematics (Upper Level)	Aug-79	Tenure Effective 1983	
Marshall P. Cady, Jr.	Professor of Chemistry	Aug-80	Tenure Effective 1984	
Delaine E. Cochran	Lecturer in Mathematics	Aug-92	Non-tenure Track	
Sukhen Dey	Associate Professor of Computer Science	Aug-83	Tenure Effective 1990	
Kent E. Edmonds	Assistant Professor of Biology	Aug-97	Tenure Decision 2003	
Margaret A. Ehringer	Lecturer in Mathematics/Program Coordinator for Mathematics (Lower Level)	Aug-88	Non-tenure Track	
Ronald B. Finkbine	Assistant Professor of Computer Science	Aug-00	Tenure Decision 2004	
Kyle Forinash, III	Professor of Physics/Program Coordinator for Physics	Aug-85	Tenure Effective 1992	
Bill J. Forsyth	Professor of Biology	Sep-67	Tenure Effective 1974	
Teresa R. Forsyth	Associate Professor of Biology/Program Coordinator for Allied Health Programs	Aug-92	Tenure Effective 1997	
Peter R. Galvin	Associate Professor of Geography	Aug-93	Tenure Effective 2000	
Kenton J. Graviss	Assistant Professor of Computer Science	Aug-00	Tenure Decision 2006	
Elaine K. Haub	Associate Professor of Chemistry	Aug-93	Tenure Effective 2001	
Joseph E. Hollingsworth	Associate Professor of Computer Science/Program Coordinator for Computer Science (Upper Level)	Aug-92	Tenure Effective 1999	
Randy E. Hunt	Assistant Professor of Biology	Aug-92	Tenure Decision 2003	
Jo Ann Jansing	Professor of Chemistry	Sep-70	Tenure Effective 1977	
Gretchen Kirchner	Associate Professor of Biology	Aug-89	Tenure Effective 1996	

## ACADEMIC UNITS-FACULTY & LIBRARIANS

Faculty	Position	Full Time Emp Date	Status	Sabbatical
W. Christopher Lang	Associate Professor of Mathematics	Aug-94	Tenure Effective 1999	Fall 2000
Ghansham M. Manwani	Lecturer in Computer Science/Program Coordinator for Computer Science (Lower Level)	Aug-97	Non-tenure Track	
Glenn M. Mason	Professor of Geography	Aug-90	Tenure Effective 1997	
Phillip E. Miller	Lecturer in Mathematics	Aug-00	Non-tenure Track	
Bahman Nassim	Professor of Chemistry/Program Coordinator for Chemistry	Aug-82	Tenure Effective 1988	
Emmanuel O. Otu	Assistant Professor of Chemistry	Aug-97	Tenure Decision 2001	
Rose S. Riehm	Lecturer in Mathematics	Aug-00	Non-tenure Track	
Gerald D. Ruth	Professor of Geography/Program Coordinator for Geosciences	Sep-65	Tenure Effective 1979	
Dylan Shi	Associate Professor of Mathematics	Aug-93	Tenure Effective 2000	Spring 2001
David W. Taylor	Professor of Biology/Program Coordinator for Biology/Curator of the IUS Herbarium	Aug-91	Tenure Effective 1997	
Minglei Wang	Research Associate in Chemistry	Aug-00	Visiting	
Pamela J. Willis	Lecturer in Mathematics	Aug-96	Non-tenure Track	
Raymond F. Wisman	Associate Professor of Computer Science	Aug-85	Tenure Effective 1993	Spring 2001
James J. Woeppel	Professor of Mathematics	Aug-73	Tenure Effective 1977	
<b>Division of Nursing</b>				
Lillian E. Yeager	Interim Dean of the Division of Nursing/Associate Professor of Nursing	Aug-73	Tenure Effective 1980	
Donna J. Bowles	Assistant Professor of Nursing	Aug-00	Tenure Decision 2006	
Kathleen W. Free	Clinical Assistant Professor of Nursing	Aug-97	Non-tenure Track	
M. Nancy Fuller	Visiting Lecturer in Nursing	Aug-98	Visiting	
Brenda V. Hackett	Lecturer in Nursing	Jun-99	Non-tenure Track	
B. Jane Hollowell	Lecturer in Nursing	Aug-97	Non-tenure Track	
Marian A. McKay	Assistant Professor of Nursing	Aug-96	Tenure Decision 2004	
Janice S. McMahan	Clinical Assistant Professor of Nursing	Aug-94	Non-tenure Track	
Judy M. Perry	Lecturer in Nursing	Aug-97	Convertible Lecturer	
Jacquelyn D. Reid	Assistant Professor of Nursing	Aug-99	Tenure Decision 2005	
Coyla J. Short	Clinical Assistant Professor of Nursing	Jan-84	Non-tenure Track	

### Purdue

## ACADEMIC UNITS-FACULTY & LIBRARIANS

Faculty	Position	Full Time Emp Date	Status	Sabbatical
Richard Kopp	Assistant Professor for Computer Graphics Technology/Site Director for Purdue University Programs	Aug-94	Tenure Effective 2001	
Timothy Cooley	Assistant Professor for Mechanical Engineering Technology	Aug-00	Tenure Track	
Edmund J. Gohmann	Associate Professor for Mechanical Engineering Technology	Aug-78	Tenure Effective 1983	
Nghia Le	Assistant Professor for Electrical Engineering Technology	Aug-98	Tenure Decision 2004	
Terrence P. O'Connor	Assistant Professor for Electrical Engineering Technology	Aug-92	Tenure	
Diana K. Stewart	Assistant Professor for Computer Graphics Technology	Aug-98	Tenure Track	
<b>School of Social Sciences</b>				
Clifford L. Staten	Dean of the School of Social Sciences/Associate Professor of Political Science	Aug-89	Tenure Effective 1996	
Jean E. Abshire	Assistant Professor of Political Science	Aug-00	Tenure Decision 2006	
Ronald J. Allman, II	Assistant Professor of Journalism	Aug-99	Tenure Decision 2005	
Benjamin Asare	Associate Professor Sociology	Aug-89	Tenure Effective 1996	
Mary Anne Baker	Professor of Psychology/Director of Institutional Research	Sep-70	Tenure Effective 1978	
Stephanie Bower	Professor of History	Sep-69	Tenure Effective 1979	
D. Bradley Burton	Assistant Professor of Psychology	Aug-98	Tenure Decision 2002	
Bernardo J. Carducci	Professor of Psychology	Aug-79	Tenure Effective 1987	
A. Glenn Crothers	Assistant Professor of History/Program Coordinator for History	Aug-97	Tenure Decision 2003	
Donna J. Dahlgren	Associate Professor of Psychology	Aug-92	Tenure Effective 2000	Spring 2001
John E. Findling	Professor of History	Aug-71	Tenure Effective 1978	
Deborah G. Finkel	Associate Professor of Psychology/Program Coordinator for Psychology/Program Coordinator for International Studies Program	Aug-92	Tenure Effective 1999	
Sandra S. French	Professor of Sociology/Director of the Master of Liberal Studies	Aug-80	Tenure Effective 1987	
Linda C. Gugin	Professor of Political Science/Program Coordinator for Political Science	Aug-71	Tenure Effective 1977	
Gordon O. Henry	Assistant Professor of Psychology	Aug-00	Tenure Decision 2005	
Richard J. Jenks	Professor of Sociology	Aug-74	Tenure Effective 1981	
Thomas D. Kotulak	Assistant Professor of Political Science	Aug-95	Tenure Decision 2001	
Robin K. Morgan	Professor of Psychology	Aug-88	Tenure Effective 1995	
John H. Newman	Professor of Sociology/Program Coordinator for Sociology	Aug-78	Tenure Effective 1985	
Gregory H. Phipps	Visiting Lecturer in Sociology	Aug-00	Visiting	
Yu Shen	Assistant Professor of History	Aug-96	Tenure Decision 2002	

## ACADEMIC UNITS-FACULTY & LIBRARIANS

Faculty	Position	Full Time Emp Date	Status	Sabbatical
G. Sam Sloss	Associate Professor of Sociology	Aug-90	Tenure Effective 1997	
James E. St. Clair	Associate Professor of Journalism/Program Coordinator for Journalism	Jan-87	Tenure Effective 1997	
Lynette L. Taylor	Visiting Assistant Professor of Psychology	Aug-00	Visiting	
Frank W. Thackeray	Professor of History	Aug-77	Tenure Effective 1984	
Joseph L. Wert	Assistant Professor of Political Science	Aug-99	Tenure Decision 2005	
Diane E. Wille	Professor of Psychology	Aug-86	Tenure Effective 1994	Year 2000/01
<b>Library</b>				
Gabrielle M. Carr	Associate Librarian/Senior Reference Librarian	Feb-85	Tenure Effective 1992	
Jacqueline A. Johnson	Associate Librarian/Reference	Aug-90	Tenure Effective 1997	
Dennis A. Kreps	Associate Librarian/Reference	Jul-91	Tenure Effective 1998	
C. Martin Rosen	Associate Librarian/Director, Library Services	Feb-95	Tenure Effective 2000	
Nancy T. Totten	Associate Librarian Reader's Services	Aug-85	Tenure Effective 1991	

**PERSONNEL SUMMARY (fall semester)**

	<b>97</b>	<b>98</b>	<b>99</b>	<b>00</b>
<b>ACADEMIC</b>				
Professors	44	44	50	48
Associate Professors	37	42	42	44
Assistant Professors	42	44	43	41
Lecturers	30	28	21	20
Instructors		1	1	0
Clinical Assistant Professor				2
Visiting Assistant Professor				2
Visiting Lecturer				7
Research Associate	1	1	1	1
Part Time Lecturers	2			0
Librarians	6	6	6	5
Administrators	65	66	64	68
<b>TOTAL</b>	<b>227</b>	<b>231</b>	<b>228</b>	<b>238</b>

**CLASSIFIED PERSONNEL\***

TE0E				1
TE0F	2	2	2	0
TE0G		1	1	1
TE0H	3	2	5	7
TE0I	2	2	2	2
TE0J	1	2	2	2
TE0K	2	2	2	2
TE0L	1	1	1	1
CLOC	4	4	2	2
CLOD	5	7	3	4
CLOE			2	2
CLOF	39	38	37	31
CLOG	13	12	12	15
CLOH	22	24	25	27
CLOI	6	5	4	5
CLOJ	3	3	3	3
CLOK	1	1	1	1
SM	42	43	43	44
<b>TOTAL</b>	<b>147</b>	<b>149</b>	<b>147</b>	<b>150</b>
<b>GRAND TOTAL</b>	<b>374</b>	<b>380</b>	<b>375</b>	<b>388</b>

\*includes appointed personnel at less than 100%

Reclassified 1997

## FACULTY AND PROFESSIONAL STAFF BY DISCIPLINE

### Fall Semester

YEAR	87	88	89	90	91	92	93	94	95	96	97	98	99	00
English	6	7	9	8	8	8	8	7	9	7	9	9*	10*	11
Fine Arts	4	4	4	4	4	4	4	4	4	5	5	5	6	6
French	1	1	1	1	1	1		1	1	1	1	1	1	1
German	1	1	1	1	1	1	1	1	1	1	1	1	1	1
Music	2	2	2	2	2	2	2	2	2	2	2	2	2	3
Philosophy	2	2	3	3	3	3	3	3	3	3	3	3	3	3
Spanish	1	1	1	1	1	1	1	1	1	1	2	2	2	3
Speech/Comm.	2	4	4	5	5	5	5	5	5	5	5	6	6	6
Theatre	2	2	2	2	2	2	2	2	2	2	3	2	2	2
<b>ARTS &amp; LETTERS</b>	<b>21</b>	<b>25</b>	<b>27</b>	<b>28*</b>	<b>28*</b>	<b>27</b>	<b>27</b>	<b>26</b>	<b>28</b>	<b>28</b>	<b>31</b>	<b>31*</b>	<b>33*</b>	<b>36</b>
Biology	5	6	7	7	7	7	7	7	7	7	8	9	9	8
Chemistry	4	4	4	4	4	4	5	5	5	5	5	5	5	5
Computer Science	4	4	4	4	4	3	4	6	4	4	6	6	6	7
Geography	2	2	2	3	3	3	3	3	3	3	3	3	3	3
Mathematics	5	6	7	7	7	9	8	7	8	9	9	9	8	11
Physics	1	1	1	1	1	1	1	1	1	1	1	1	1	1
Research Assistant														1
<b>NATURAL SCIENCES</b>	<b>21</b>	<b>23</b>	<b>25</b>	<b>26</b>	<b>26</b>	<b>27</b>	<b>28</b>	<b>29</b>	<b>28</b>	<b>29</b>	<b>32</b>	<b>33</b>	<b>32</b>	<b>36</b>
History	5	5	5	6	5	5	5	5	5	5	5	5	5	5
Journalism	1	1	1	1	1	1	1	1	1	1	1	2	2	2
Political Science	4	3	4	4	4	4	4	3	4	4	4	4	4	5
Psychology	4	5	4	5	7	7	7	7	7	7	10	9	8	9
Sociology	4	5	6	5	5	5	5	5	5	6	7	6	5	6
<b>SOCIAL SCIENCES</b>	<b>18</b>	<b>19</b>	<b>20</b>	<b>21</b>	<b>22</b>	<b>22</b>	<b>22</b>	<b>21</b>	<b>22</b>	<b>23</b>	<b>27</b>	<b>26</b>	<b>24</b>	<b>27</b>
Business	12	15	14	15	16	21	22	22	21	22	22	23	24	23
Economics	4	4	4	4	4	5	5	5	5	5	5	4	4	5
<b>BUSINESS</b>	<b>16</b>	<b>19</b>	<b>18</b>	<b>19</b>	<b>20</b>	<b>25</b>	<b>27</b>	<b>27</b>	<b>26</b>	<b>27</b>	<b>27</b>	<b>27</b>	<b>28</b>	<b>28</b>
Education	14	15	15*	16*	20*	18	19	18	18	18	18	22*	21*	22
HPER	1	1	1	1	1	1	1	1	1	1	1	1	1	0
<b>EDUCATION</b>	<b>15</b>	<b>16</b>	<b>16</b>	<b>17</b>	<b>21</b>	<b>19</b>	<b>20</b>	<b>19</b>	<b>19</b>	<b>19</b>	<b>19</b>	<b>23*</b>	<b>22*</b>	<b>22</b>
<b>NURSING</b>	<b>9</b>	<b>10</b>	<b>10*</b>	<b>10*</b>	<b>12*</b>	<b>11</b>	<b>11</b>	<b>10</b>	<b>9</b>	<b>11</b>	<b>12</b>	<b>12</b>	<b>12</b>	<b>11</b>
<b>PURDUE PROGRAMS</b>	<b>3</b>	<b>3</b>	<b>4</b>	<b>4</b>	<b>4*</b>	<b>4</b>	<b>4</b>	<b>4</b>	<b>5</b>	<b>4</b>	<b>4</b>	<b>7*</b>	<b>7*</b>	<b>5</b>
<b>TOTAL DIV. FAC.</b>	<b>106</b>	<b>118</b>	<b>123</b>	<b>128</b>	<b>136</b>	<b>139</b>	<b>143</b>	<b>136</b>	<b>137</b>	<b>141</b>	<b>152</b>	<b>159</b>	<b>158</b>	<b>165</b>
<b>LIBRARY</b>	<b>3</b>	<b>6</b>	<b>6</b>	<b>6</b>	<b>6</b>	<b>6</b>	<b>6</b>	<b>6</b>	<b>6</b>	<b>6</b>	<b>6</b>	<b>6</b>	<b>6</b>	<b>5</b>
ACADEMIC AFFAIRS	8	8	9	9	10	13	13	13	12	10	10	13	12	12
ADMIN. AFFAIRS	11	15	16	17	19	19	18	18	17	11	11	11	11	10
CHANCELLOR	1	2	2	2	3	3	3	3	5	7	3	3	3	3
EXTERNAL AFFAIRS	3	3	2	3	2	2	2	2	2	2	6	6	6	6
INTEGRATED TECH.	-	-	-	-	-	-	-	-	-	9	9	8	8	10
STUDENT AFFAIRS	17	19	22	23	23	23	23	22	22	24	26	25	24	28
<b>TOTAL ADMIN.</b>	<b>43</b>	<b>53</b>	<b>57</b>	<b>60</b>	<b>63</b>	<b>66</b>	<b>65</b>	<b>64</b>	<b>64</b>	<b>69</b>	<b>73</b>	<b>72</b>	<b>70</b>	<b>69</b>
<b>GRAND TOTAL</b>	<b>149</b>	<b>171</b>	<b>180</b>	<b>188</b>	<b>199</b>	<b>205</b>	<b>208</b>	<b>200</b>	<b>201</b>	<b>210</b>	<b>225</b>	<b>231</b>	<b>228</b>	<b>234</b>

\*Includes Counselors or Coordinators at PA rank until 2000.

## STUDENT ENROLLMENT HISTORY

YEAR	94/95	95/96	96/97	97/98	98/99	99/00	00/01
<b>FALL SEMESTER</b>							
Undergrad-PT	2496.0	2461.0	2358.0	2421.0	2500.0	2594.0	2669.0
Undergrad-FT	2540.0	2412.0	2496.0	2518.0	2738.0	2846.0	2986.0
<b>Undergrad-Total</b>	<b>5036.0</b>	<b>4873.0</b>	<b>4854.0</b>	<b>4939.0</b>	<b>5238.0</b>	<b>5440.0</b>	<b>5655.0</b>
Graduate-PT	416.0	488.0	525.0	565.0	556.0	657.0	652.0
Graduate-FT	12.0	20.0	17.0	16.0	19.0	18.0	20.0
<b>Graduate-Total</b>	<b>428.0</b>	<b>508.0</b>	<b>542.0</b>	<b>581.0</b>	<b>575.0</b>	<b>675.0</b>	<b>672.0</b>
<b>IUS TOTAL</b>	<b>5464.0</b>	<b>5381.0</b>	<b>5396.0</b>	<b>5520.0</b>	<b>5813.0</b>	<b>6115.0</b>	<b>6327.0</b>
<b>FT Equivalent</b>	<b>3278.0</b>	<b>3203.0</b>	<b>3237.0</b>	<b>3312.0</b>	<b>3538.0</b>	<b>3702.0</b>	<b>3890.7</b>
<b>SPRING SEMESTER</b>							
Undergrad-PT	2420.0	2297.0	2305.0	2379.0	2479.0	2492.0	
Undergrad-FT	2186.0	2165.0	2235.0	2331.0	2514.0	2595.0	
<b>Undergrad-Total</b>	<b>4606.0</b>	<b>4462.0</b>	<b>4540.0</b>	<b>4710.0</b>	<b>4553.0</b>	<b>5087.0</b>	
Graduate-PT	405.0	459.0	514.0	532.0	587.0	600.0	
Graduate-FT	15.0	19.0	20.0	27.0	24.0	26.0	
<b>Graduate-Total</b>	<b>420.0</b>	<b>478.0</b>	<b>534.0</b>	<b>559.0</b>	<b>611.0</b>	<b>626.0</b>	
<b>IUS TOTAL</b>	<b>5026.0</b>	<b>4940.0</b>	<b>5074.0</b>	<b>5269.0</b>	<b>5604.0</b>	<b>5713.0</b>	
<b>FT Equivalent</b>	<b>2968.0</b>	<b>2932.0</b>	<b>3012.0</b>	<b>3125.0</b>	<b>3355.8</b>	<b>3456.1</b>	
<b>FIRST SUMMER SESSION</b>							
Undergrad-PT	1217.0	1255.0	1232.0	1281.0	1328.0	1258.0	
Undergrad-FT	382.0	385.0	412.0	492.0	536.0	420.0	
<b>Undergrad-Total</b>	<b>1599.0</b>	<b>1640.0</b>	<b>1644.0</b>	<b>1773.0</b>	<b>1864.0</b>	<b>1678.0</b>	
Graduate-PT	264.0	277.0	300.0	283.0	369.0	365.0	
Graduate-FT	69.0	82.0	93.0	104.0	106.0	143.0	
<b>Graduate-Total</b>	<b>333.0</b>	<b>359.0</b>	<b>393.0</b>	<b>387.0</b>	<b>475.0</b>	<b>508.0</b>	
<b>IUS TOTAL</b>	<b>1932.0</b>	<b>1999.0</b>	<b>2037.0</b>	<b>2160.0</b>	<b>2339.0</b>	<b>2186.0</b>	
<b>FT Equivalent</b>	<b>518.0</b>	<b>535.0</b>	<b>555.0</b>	<b>606.0</b>	<b>669.8</b>	<b>616.6</b>	
<b>SECOND SUMMER SESSION</b>							
Undergrad-PT	1137.0	1115.0	1181.0	1149.0	1182.0	1084.0	
Undergrad-FT	208.0	240.0	276.0	342.0	371.0	347.0	
<b>Undergrad-Total</b>	<b>1345.0</b>	<b>1355.0</b>	<b>1457.0</b>	<b>1491.0</b>	<b>1553.0</b>	<b>1431.0</b>	
Graduate-PT	245.0	248.0	261.0	262.0	316.0	398.0	
Graduate-FT	88.0	80.0	94.0	87.0	76.0	107.0	
<b>Graduate-Total</b>	<b>333.0</b>	<b>328.0</b>	<b>355.0</b>	<b>349.0</b>	<b>392.0</b>	<b>505.0</b>	
<b>IUS TOTAL</b>	<b>1678.0</b>	<b>1683.0</b>	<b>1812.0</b>	<b>1840.0</b>	<b>1945.0</b>	<b>1936.0</b>	
<b>FT Equivalent</b>	<b>433.6</b>	<b>438.0</b>	<b>498.0</b>	<b>500.0</b>	<b>521.6</b>	<b>551.9</b>	

---

**CREDIT HOUR HISTORY**

---

<b>YEAR</b>	<b>89/90</b>	<b>90/91</b>	<b>91/92</b>	<b>92/93</b>	<b>93/94</b>	<b>94/95</b>	<b>95/96</b>	<b>96/97</b>	<b>97/98</b>	<b>98/99</b>	<b>99/00</b>	<b>00/01</b>
<b>FALL SEMESTER</b>												
Undergraduate	46,935.5	49,680.5	51,452.0	52,868.0	50,431.5	47,036.0	45,414.0	45,778.5	46,680.5	50,095.5	52,134.5	54,368.0
Graduate	1,145.0	959.0	1,036.0	1,326.0	1,594.0	1,712.0	2,105.0	2,216.5	2,404.0	2,379.0	2,723.5	3,194.5
<b>TOTAL</b>	<b>48,080.5</b>	<b>50,639.5</b>	<b>52,488.0</b>	<b>54,194.0</b>	<b>52,025.5</b>	<b>48,748</b>	<b>47,519.0</b>	<b>47,995.0</b>	<b>49,084.0</b>	<b>52,474.5</b>	<b>54,858.0</b>	<b>57,562.5</b>
<b>SPRING SEMESTER</b>												
Undergraduate	45,011.0	47,240.0	48,062.5	49,290.5	45,560.0	42,355.0	41,501.0	42,395.0	44,366.5	47,148.5	48,510.0	
Graduate	1,142.0	1,032.0	1,134.0	1,243.0	1,696.0	1,731.0	1,983.5	2,226.0	1,999.0	2,550.5	2,665.5	
<b>TOTAL</b>	<b>46,153.0</b>	<b>48,272.0</b>	<b>49,196.5</b>	<b>50,533.5</b>	<b>47,256.0</b>	<b>44,086.0</b>	<b>43,484.5</b>	<b>44,621.0</b>	<b>46,365.5</b>	<b>49,699.0</b>	<b>51,175.5</b>	
<b>FIRST SUMMER</b>												
Undergraduate	7,400.0	7,405.0	7,123.0	6,834.0	6,363.0	6,250.0	6,375.0	6,497.0	7,231.5	7,859.0	6,781.0	
Graduate	847.0	1,058.0	1,037.0	1,041.0	1,340.0	1,215.0	1,325.5	1,459.0	1,487.0	1,750.0	1,974.0	
<b>TOTAL</b>	<b>8,247.0</b>	<b>8,463.0</b>	<b>8,160.0</b>	<b>7,875.0</b>	<b>7,703.0</b>	<b>7,465.0</b>	<b>7,700.5</b>	<b>7,956.0</b>	<b>8,718.5</b>	<b>9,609.0</b>	<b>8,755.0</b>	
<b>SECOND SUMMER</b>												
Undergraduate	5,855.0	6,018.0	6,406.0	6,083.0	4,797.0	5,051.0	5,022.0	5,746.0	5,853.0	6,071.0	5,954.0	
Graduate	902.0	852.0	875.0	740.0	870.0	1,163.0	1,232.0	1,378.0	1,321.0	1,402.0	1,859.5	
<b>TOTAL</b>	<b>6,757.0</b>	<b>6,870.0</b>	<b>7,281.0</b>	<b>6,823.0</b>	<b>5,667.0</b>	<b>6,214.0</b>	<b>6,254.0</b>	<b>7,124.0</b>	<b>7,174.0</b>	<b>7,473.0</b>	<b>7,813.5</b>	
<b>TOTAL YEAR</b>												
Undergraduate	105,201.5	111,343.5	113,043.5	115,075.5	107,151.5	100,692.0	98,676.5	100,416.5	107,546.5	111,174.0	113,379.5	
Graduate	4,036.0	3,901.0	4,082.0	4,350.0	5,500.0	5,821.0	6,757.5	7,279.5	7,186.0	8,082.0	9,222.5	
<b>GRAND TOTAL</b>	<b>109,237.5</b>	<b>114,244.5</b>	<b>117,125.5</b>	<b>119,425.5</b>	<b>112,651.5</b>	<b>106,513.0</b>	<b>105,434.0</b>	<b>107,696.0</b>	<b>114,732.5</b>	<b>119,256.0</b>	<b>122,602.0</b>	

**STUDENT CHARACTERISTICS  
FALL SEMESTER 2000**

<b>Undergraduate Age by Gender</b>				
	Female	Male	Total	% of Total
17 & unde	94	45	139	2.5%
18	392	236	628	11.1%
19	412	271	683	12.1%
20	353	253	606	10.7%
21	325	211	536	9.5%
22	274	203	477	8.4%
23	197	127	324	5.7%
24	110	102	212	3.8%
25	121	81	202	3.6%
26	89	70	159	2.8%
27	83	74	157	2.8%
28	69	42	111	2.0%
29	68	53	124	2.2%
30	54	37	91	1.6%
31-35	236	109	345	6.1%
36-40	237	76	313	5.5%
41-45	170	75	245	4.3%
46-50	127	54	181	3.2%
51-55	55	18	73	1.3%
56-60	23	4	27	0.5%
61+	10	4	14	0.2%
<b>Total</b>	<b>3499</b>	<b>2145</b>	<b>5647</b>	
<b>% of Total</b>	<b>62.0%</b>	<b>38.0%</b>		

Undergraduate Median Age =22  
Undergraduate Mean Age =25.6

<b>Graduate Age by Gender</b>				
	Female	Male	Total	% of Total
25 & unde	84	37	121	15.5%
26-30	150	95	245	31.3%
31-35	85	56	141	18.0%
36-40	67	35	102	13.0%
41-45	56	15	71	9.1%
46-50	36	21	57	7.3%
51-55	28	11	39	5.0%
56+	3	3	6	0.8%
<b>Total</b>	<b>509</b>	<b>273</b>	<b>782</b>	

Graduate Median Age=31  
Graduate Mean Age =33.8

<b>Undergraduate Class by Gender</b>			
	Female	Male	Total
High School	68	39	107
Associate 1st	45	24	69
Associate 2nd	47	40	87
Freshmen	1044	748	1792
Sophomores	709	408	1117
Juniors	570	346	916
Seniors	734	375	1109
Spec. UG	269	167	436
Uncoded	13	1	14
<b>Total</b>	<b>3499</b>	<b>2148</b>	<b>5647</b>

<b>Undergraduate High Schools</b>			
Indiana	Total	Kentucky	Total
Austin	49	Assumption	21
Borden	31	Atherton	18
Brownstown Central	17	Ballard	19
Charlestown	162	Butler	69
Clarksville	128	Central	12
Corydon	165	Christian Acad.	12
Crawford County	90	Doss	18
Crothersville	18	Dupont Manual	26
Eastern	90	Eastern	22
Floyd Central	433	Fairdale	13
Graceland Christian	46	Fern Creek	18
Henryville	63	Highview View	10
Jeffersonville	495	Holy Cross	15
Jennings County	22	Iroquois	13
Lanesville	60	Jefferson Co HS	10
Madison	65	Jeffersontown	16
New Albany	546	Male	35
New Washington	55	Mercy Academy	24
North Harrison	170	Moore	12
Orleans	23	Oldham County	22
Paoli Community	47	Portland Christ.	19
Perry Central	12	Presentation	18
Providence	295	Pleasure Rdg Pk	45
Restoration	10	Sacred Heart	13
Salem	173	Seneca	23
Scottsburg	124	Shawnee	10
Seymour	40	South Oldham	17
Shawe Memorial	15	Southern	14
Silver Creek	178	St. Xavier	36
South Central	53	Trinity	22
Southwestern	38	Valley	19
Springs Valley	13	Other KY HS	122
Switzerland Co.	16		
West Washington	72	Out-of-State GED	61
Other IN High School	103	Other High School	177
Indiana GED	141	Uncoded	538

---

**Undergraduate Home County**

County	Total	% of Total
Clark	1637	29.0%
Crawford	93	1.6%
Floyd	1478	26.2%
Harrison	553	9.8%
Jackson	80	1.4%
Jefferson	136	2.4%
Orange	87	1.5%
Scott	210	3.7%
Washingt	369	6.5%
Other IN	135	2.4%
Out of Sta	869	15.4%
<b>Total</b>	<b>5647</b>	

---

**Graduate Home County**

	Total	% of Total
Clark	##	17.1%
Crawford	7	0.9%
Floyd	##	18.9%
Harrison	47	6.0%
Jackson	12	1.5%
Jefferson	27	3.5%
Orange	7	0.9%
Scott	25	3.2%
Washingt	21	2.7%
Other IN	48	6.1%
Out of Sta	##	39.1%
<b>Total</b>	<b>##</b>	

---

**Undergraduate Ethnicity**

	Total	% of Total
American	11	0.2%
Asian	26	0.5%
Black	160	2.8%
Hispanic	43	0.8%
Non-Res /	17	0.3%
Other	38	0.7%
White	5347	94.7%
No Answer	5	0.1%
<b>Total</b>	<b>5647</b>	

---

**Graduate Ethnicity**

	Total	% of Total
American	2	0.3%
Asian	7	0.9%
Black	34	4.3%
Hispanic	6	0.8%
Non-Res /	4	0.5%
Other	6	0.8%
White	##	92.5%
<b>Total</b>	<b>##</b>	

---

**Undergraduate School by Reciprocity**

	No	Yes	Total	% of Total
Arts & Let	264	47	311	5.5%
Business	362	58	420	7.4%
Education	402	62	464	8.2%
Natural S	376	72	448	7.9%
Nursing	116	12	128	2.3%
Social Sc	315	47	362	6.4%
Univ. Div.	2423	322	2745	48.6%
Cont. Stu	276	59	335	5.9%
NonDegre	292	133	425	7.5%
Transfer	7	2	9	0.2%
<b>Total</b>	<b>4833</b>	<b>814</b>	<b>5647</b>	

---

**Graduate School by Reciprocity**

	No	Yes	Total	% of Total
Business	118	94	212	27.1%
Education	320	156	476	60.9%
Liberal St	22	9	31	4.0%
NonDegre	35	28	63	8.1%
<b>Total</b>	<b>495</b>	<b>287</b>	<b>782</b>	

# APPROVED DEGREE PROGRAMS INDIANA UNIVERSITY SOUTHEAST

## **FOUR-YEAR BACCALAUREATE DEGREES**

BA	Biology	BA	Music
BA	Chemistry		< Business
BA	Communication		< Composition
	< Advertising		< Performance
	< Speech		< Technology
	< Theatre	BA	Philosophy
BA	Economics	BA	Political Science
BA	English	BA	Psychology
	< Creative Writing	BA	Sociology
	< Expository Writing	BA	Spanish
	< Literature	BGS	General Studies
BA	Fine Arts	BS	Business
	< Ceramics		< Accounting
	< Drawing		< Business Economics & Public
	< Graphic Design		Policy
	< Painting		< Finance
	< Printmaking		< Management
BA	French		< Marketing
BA	Geography	BS	Computer Science
BA	German		< Information Systems
BA	History		< Math/Science
BA	Mathematics	BS	Elementary Education
		BS	Medical Technology
		BS	Nursing
		BS	Secondary Education
		BS	Special Education

## **MASTER-S DEGREES**

MBA	Business Administration
MLS	Liberal Studies
MS	Accounting
MS	Counseling
MS	Elementary Education
MS	Secondary Education

## **TWO-YEAR ASSOCIATE DEGREES**

AA	Arts and Science
AS	Electrical Engineering Technology (Purdue)
AS	Mechanical Engineering Technology (Purdue)
AS	Technical Graphics (Purdue)
GS	General Studies
AS	Business Administration
AS	Computer Science
AS	Journalism
AS	Recreational Leadership

**CERTIFICATES**

Coding Specialist  
International Studies  
Medical Transcription  
Supervision  
Women's Studies

**POST-BACCALAUREATE  
CERTIFICATES**

Accounting  
Business  
Economics  
Finance  
Human Resource Management  
Management  
Marketing  
Operations Management  
Small Business

**POST-MASTER-S CERTIFICATES**

Elementary School Administration  
and  
Supervision  
Secondary School Administration  
and Supervision

rjm:9/21/00  
file: books/deg-prog

## IUS DEGREES AWARDED (Academic Year)

(Academic Year includes August, December, and May Graduates)

PROGRAM	DATE	93/94	94/95	95/96	96/97	97/98	98/99	99/00
AA Liberal Stu.	3/81	2	4	-	4	4	5	10
AS EET-Purdue	-----	5	3	9	7	10	3	6
AS MET-Purdue	5/68	9	3	16	15	10	7	6
AS TGT-Purdue	'91	-	3	1	4	5	11	7
AS-OLS-Purdue	7/98							1
AGS Gen. Stu.	9/75	28	33	19	26	32	26	26
AS Bus. Admin.	'95	-	20	30	30	55	60	55
AS Comp. Sci.	11/77	7	9	8	9	12	25	22
AS Journalism	12/74	5	8	4	3	8	4	5
AS Rec. Lead.	12/74	3	1	2	2	2	3	2
<b>SUB-TOTAL</b>		<b>59</b>	<b>84</b>	<b>89</b>	<b>100</b>	<b>138</b>	<b>144</b>	<b>140</b>
BA Biology	1/70	5	10	11	14	13	18	16
BA Chemistry	4/71	3	3	1	6	7	1	7
BA Communic.	3/82	17	17	18	15	23	29	22
BA Economics	10/70	2	2	1	3	-	2	0
BA English	10/69	13	13	10	13	9	8	12
BA Fine Arts	2/77	3	9	5	9	6	14	5
BA French						1	2	1
BA Geography	3/82	5	1	3	3	6	1	3
BA History	4/70	3	6	3	2	5	5	7
BA Mathematics	3/73	2	7	-	1	2	4	3
BA Music	3/84	2	2	-	-	2	4	3
BA Philosophy	9/80	1	1	1	1	2	1	1
BA Pol. Sci.	11/70	3	5	9	14	7	7	6
BA Psychology	4/75	36	32	36	42	29	38	34
BA Sociology	5/72	8	8	5	7	6	3	8
BA Spanish						4	9	1
BA Sp. & Th.	3/77	-	-	-	-	-		
BGS Gen. Stu.	9/75	53	53	54	49	63	54	60
BS Bus. Admin.	4/69	173	128	118	109	101	107	99
BS Elem. Educ.	1/68	69	64	57	60	58	48	55
BS Comp. Sci.	3/82	6	5	5	6	10	5	13
BS Med. Tech.	11/69	4	-	-	2	-	0	1
BS Nursing	3/78	61	62	62	47	47	79	43
BS Sec. Educ.	6/70	31	22	35	34	42	36	39
BS Spec. Educ.	5/78	1	-	-	2	3	1	5
<b>SUB-TOTAL</b>		<b>501</b>	<b>450</b>	<b>434</b>	<b>439</b>	<b>445</b>	<b>476</b>	<b>444</b>
MBA Bus. Admin.	'91	3	8	12	16	26	32	40
MLS Lib. Studies	1/94	-	-	1	2	-	2	2
MS Coun./Guid.	4/71	10	12	14	17	18	15	15
MS Elem. Educ.	4/71	27	29	43	43	52	61	51
MS Sec. Educ.	4/71	22	18	34	23	42	39	51
<b>SUB-TOTAL</b>		<b>62</b>	<b>67</b>	<b>104</b>	<b>101</b>	<b>138</b>	<b>149</b>	<b>159</b>
<b>GRAND TOTAL</b>		<b>622</b>	<b>601</b>	<b>627</b>	<b>640</b>	<b>721</b>	<b>769</b>	<b>743</b>

## OPERATING INCOME AND EXPENDITURES GENERAL FUND

	2000-01		1990-00		1998-99	
	Base Budge	Percent	Actual	Percent	Actual	Percent
<b>OPERATING INCOME</b>						
<b>Student Fees:</b>						
Fall	\$5,774,136	16.89%	\$5,582,162	17.19%	\$5,149,933	17.30%
Spring	5,307,346	15.52%	4,919,181	15.15%	4,684,277	15.74%
Summer	1,943,943	5.68%	1,700,336	5.24%	1,680,374	5.65%
Application	67,450	0.20%	85,082	0.26%	77,664	0.26%
Technology	629,500	1.84%	394,785	1.22%	380,207	1.28%
<b>Total Student Fees (1)</b>	<b>13,722,375</b>	<b>40.13%</b>	<b>12,681,546</b>	<b>39.05%</b>	<b>11,972,455</b>	<b>40.22%</b>
Appropriation-Operating	16,125,548	47.16%	15,256,137	46.98%	13,836,275	46.49%
Appropriation-Debt Service	3,484,999	10.19%	3,382,604	10.42%	3,018,091	10.14%
<b>Other Income:</b>						
Sales & Service	79,032	0.23%	81,647	0.25%	80,072	0.27%
Transcript Income	23,000	0.07%	27,693	0.09%	27,595	0.09%
Vending Commissions	16,000	0.05%	15,978	0.05%	16,247	0.05%
Other Income	196,446	0.57%	136,106	0.42%	113,816	0.38%
Title IV Admin Fees	59,700	0.17%	45,008	0.14%	37,558	0.13%
Gifts and Grants	0	0.00%	163,110	0.50%	43,348	0.15%
Statewide Tech	126,483	0.37%	180,471	0.56%	161,079	0.54%
Interest	350,000	1.02%	353,158	1.09%	356,285	1.20%
Transfers	11,300	0.03%	153,495	0.47%	101,152	0.34%
<b>Total Other Income</b>	<b>861,961</b>	<b>2.52%</b>	<b>1,156,666</b>	<b>3.56%</b>	<b>937,152</b>	<b>3.15%</b>
<b>TOTAL OPERATING INCOME</b>	<b>34,194,883</b>	<b>100.00%</b>	<b>32,476,953</b>	<b>100.00%</b>	<b>\$29,763,973</b>	<b>100.00%</b>
<b>OPERATING EXPENDITURES</b>						
Salary & Fr Benefits	\$23,206,254	67.86%	\$21,434,489	65.23%	\$20,212,859	67.40%
Wages	500,582	1.46%	560,268	1.71%	505,014	1.68%
Supplies & Expense	4,299,281	12.57%	4,623,245	14.07%	4,089,471	13.64%
Scholarships (1)	687,332	2.01%	691,381	2.10%	621,028	2.07%
Travel	257,734	0.75%	304,557	0.93%	283,093	0.94%
Equipment	774,099	2.26%	630,355	1.92%	648,250	2.16%
Library Books	514,386	1.50%	508,335	1.55%	564,067	1.88%
Unallocated	383,946	1.12%	0	0.00%	0	0.00%
Transfers	86,270	0.25%	722,416	2.20%	48,851	0.16%
Facilities Debt Service	3,484,999	10.19%	3,382,603	10.29%	3,018,091	10.06%
<b>TOTAL EXPENDITURES</b>	<b>34,194,883</b>	<b>100.00%</b>	<b>32,857,649</b>	<b>100.00%</b>	<b>\$29,990,724</b>	<b>100.00%</b>

OPERATING GAIN (LOSS) (2)                      \$0                                      (\$380,696)                                      (\$226,751)

(1) Does not include income and financial aid associated with the non-resident component of tuition for reciprocity students.

(2) Negative balances were offset by transfers from campus reserves.

**OPERATING EXPENDITURES BY FUNCTION  
GENERAL FUND**

	2000-01		1999-00		1998-99	
	Base Budget	Percentage	Actual	Percentage	Actual	Percentage
Instruction	16,547,758	53.88%	15,641,623	53.07%	14,727,750	54.60%
Research	32,623	0.11%	30,339	0.10%	27,270	0.10%
Academic Support	2,822,625	9.19%	2,557,978	8.68%	2,562,724	9.50%
Student Services	1,707,808	5.56%	1,581,759	5.37%	1,399,230	5.19%
Institutional Support	6,627,688	21.58%	6,740,484	22.87%	5,544,289	20.56%
Physical Plant	2,284,050	7.44%	2,231,481	7.57%	2,090,403	7.75%
Scholarships & Fellowships (1)	687,332	2.24%	691,381	2.35%	620,968	2.30%
<b>TOTAL</b>	<b>30,709,884</b>	<b>100.00%</b>	<b>29,475,045</b>	<b>100.00%</b>	<b>26,972,634</b>	<b>100.00%</b>
Facilities Debt Service (2)	3,484,999		3,382,604		3,018,091	
<b>GRAND TOTAL</b>	<b>34,194,883</b>		<b>32,857,649</b>		<b>29,990,725</b>	

(1) Scholarships & Fellowships does not include the non-resident component of tuition for reciprocity students.

(2) Facilities Debt Service is funded from a dedicated state appropriation.

**BALANCE SHEET  
GENERAL FUND**

	6/30/00	6/30/99	Change
<b>ASSETS</b>			
Cash Balance	2,872,071	3,664,680	(792,609)
Cash Revolving Fund	21,200	20,200	1,000
Accounts Receivable	320,323	215,559	104,764
Prepaid Expense	44,309	43,398	911
<b>TOTAL ASSETS</b>	<b>3,257,903</b>	<b>3,943,837</b>	<b>(685,934)</b>
<b>LIABILITIES (1)</b>			
Accounts Payable	331,107	769,127	(438,020)
Deferred Income	984,165	718,791	265,374
Interim Operating Loan	27,743	160,336	(132,593)
<b>TOTAL LIABILITIES</b>	<b>1,343,015</b>	<b>1,648,254</b>	<b>(305,239)</b>
<b>FUND BALANCE</b>			
Reserve Commitments:			
Guideline Reserves	1,025,846	942,558	83,288
Tentative Reserve Commitments (2000-01)	461,500	658,970	(197,470)
Reserves Available for Future Commitments	32	12,434	(12,402)
<b>Total Reserves</b>	<b>1,487,378</b>	<b>1,613,962</b>	<b>(126,584)</b>
Balances Carried Forward in Account Budgets	427,509	681,621	(254,112)
<b>TOTAL FUND BALANCE</b>	<b>1,914,887</b>	<b>2,295,583</b>	<b>(380,696)</b>
<b>TOTAL LIABILITIES and FUND BALANCE</b>	<b>3,257,902</b>	<b>3,943,837</b>	<b>(685,935)</b>

(1) Liabilities do not include accrued vacation, which totaled \$526,145 on 6/30/00 and \$499,840 on 6/30/99, or outstanding encumbrances, which totaled \$605,246 on 6/30/00 and \$680,272 on 6/30/99.

---

**IUS - PHYSICAL FACILITIES**

<b>Building</b>	<b>Year Occupied</b>	<b>Gross Square Feet</b>
<b>Physical Sciences Building</b>	<b>1973</b>	<b>32,641</b>
<b>Crestview Hall</b>	<b>1973</b>	<b>39,935</b>
<b>Library Building</b>	<b>1973</b>	<b>81,586</b>
<b>Service Building</b>	<b>1973</b>	<b>15,509</b>
<b>Life Sciences Building</b>	<b>1975</b>	<b>41,401</b>
<b>Hillside Hall</b>	<b>1975</b>	<b>48,458</b>
<b>University Center</b>	<b>1976</b>	<b>32,132</b>
<b>Activities Building</b>	<b>1979</b>	<b>32,467</b>
<b>Knobview Hall</b>	<b>1992</b>	<b>77,797</b>
<b>Ogle Center</b>	<b>1996</b>	<b>87,687</b>
<b>Children's Center</b>		<b>2,051</b>
<b>TOTAL</b>		<b>491,664</b>

# FACULTY SENATE 2000-2001

<b>Chancellor..... F. C. Richardson</b>
<b>President ..... Chris Bjornson</b>
<b>Parliamentarian ..... Uric B. Dufrene</b>

## **VOTING MEMBERS**

### **Arts & Letters**

Timothy J. Ambrose (1)  
Samantha M. Earley (2)  
Camille F. Garnier (2)  
Curtis H. Peters (1)

### **Business**

G. Richard French (2)  
William I. Norton (1)  
A. Jay White (1)  
Alan Wong (2)

### **Education**

Steven W. Gilbert (2)  
William D. Jamski (1)  
Jeanette C. Nunnolley (1)

### **Library Services**

Jacqueline A. Johnson (1)

### **Natural Sciences**

Kent E. Edmonds (2)  
Elaine K. Haub (2)  
Emmanuel O. Otu (1)  
Galen A. Renwick (1)

### **Nursing**

Jacquelyn D. Reid (2)  
Lillian E. Yeager (1)

### **Purdue Programs**

Terrence P. O'Connor (1)

### **Social Sciences**

Benjamin Asare (2)  
A. Glenn Crothers (2)  
Deborah G. Finkel (2)  
John H. Newman (1)

### **Adjunct Faculty**

David R. Stevens (2)  
Vacant

## **NON-VOTING MEMBERS**

### **Administration**

F. C. Richardson  
Gilbert W. Atnip  
Joelyn K. Ainley  
Mark P. Mixner

### **Ex-Officio Faculty**

Joanna Goldstein (Arts & Letters)  
Richard Kopp (Purdue Programs)  
C. Martin Rosen (Library)  
Clifford L. Staten (Social Sciences)

### **Continuing Studies**

Sandra Brown

### **University Division**

Sherry L. Haehl

## **Professional Staff Council**

### **Staff Council**

Trudy Walters

### **Student Government**

Andrew Takami

## **University Faculty Council**

Frank H. Wadsworth

---

## FACULTY SENATE COMMITTEES

### 2000-2001

---

#### ACADEMIC POLICIES COMMITTEE

- 1 Guy O. Wall, Chair (2)
- 2 Virginia S. Anderson (2)
- 3 Gilbert W. Atnip #
- 4 Bernardo J. Carducci (2)
- 5 Brenda V. Hackett (1)
- 6 Carolyn L. Kraft #
- 7 Glenn M. Mason (1)
- 8 Jonathan A. Rakich (2)
- 9 Nancy T. Totten (1)
- 10 Erin Graham \*
- 11 Andrew Takami \*

#### ARTS & SCIENCES COORDINATING COMMITTEE

- D. Eric Schansberg, Chair (1)
- 2 Virginia S. Anderson (2)
- 3 Bernardo J. Carducci (2)
- 4 Deborah G. Finkel (1)
- 5 Camille F. Garnier (1)
- 6 Randy E. Hunt (2)
- 7 Glenn M. Mason (1)

#### BUDGETARY AFFAIRS

- 1 David W. Taylor, Chair (2)
- 2 Linda C. Gugin (3)
- 3 James L. Kauffman (1)
- 4 Eldon L. Little (2)
- 5 Janice S. McMahan (2)
- 6 Mark P. Mixner #
- 7 Lee L. Morganett (1)
- 8 C. Martin Rosen (2)
- 9 Adjunct Faculty

#### EXECUTIVE COMMITTEE

- 1 Chris Bjornson, President
- 2 William D. Jamski
- 3 John H. Newman

#### FACULTY AFFAIRS

- 1 Gabrielle M. Carr, Chair (1)
- 2 A. Janardhanan Alse (1)
- 3 Anne E. Allen (2)
- 4 Bahman Nassim (1)
- 5 John H. Newman (1)
- 6 Coyla J. Short (2)
- 7 Education
- 8 Adjunct Faculty
- 9 UFC Fringe Benefits Committee #

#### FACULTY BOARD OF REVIEW

- 1 Kathryn W. Ernstberger
- 2 Joseph E. Hollingsworth
- 3 Bahman Nassim
- 4 Frank W. Thackeray
- 5 Christa Zorn

#### ALTERNATES:

- 1 Kyle Forinash
- 2 Susan G. Mann
- 3 Rosemarie Smead
- 4 Frances H. Squires
- 5 Frank H. Wadsworth

#### GENERAL STUDIES COMMITTEE

- 1 Annette Wyandotte, Chair (1)
- 2 Sandra E. Brown #
- 3 A. Glenn Crothers (2)
- 4 Randy E. Hunt (2)
- 5 Susan R. Ridout (2)
- 6 A. Jay White (1)

#### HONORS COUNCIL

- 1 Ronald J. Allman (2)
- 2 Bohdan Bochan (1)
- 3 Marshall P. Cady (2)
- 4 Jacqueline Johnson (2)
- 5 G. Sam Sloss (3)

#### IMPROVEMENT OF LEARNING COMMITTEE

- 1 Kathleen W. Free, Chair (1)
  - 2 Patrick J. Daly (1)
  - 3 J. Douglas Denton #
  - 4 Margaret A. Ehringer #
  - 5 Teesue H. Fields (2) (Catherine A. Shea - Fall)
  - 6 John Harvey #
  - 7 Thomas J. Keefe (2)
  - 8 Marcia T. Segal #
  - 9 Yu Shen (2)
  - 10 Pamela J. Wills (1)
  - 11 Charles Singleton \*
  - 12 Andrew Takami
-

---

## FACULTY SENATE COMMITTEES Con't

---

### IMPROVEMENT OF WRITING

- 1 Stephanie Bower, Chair (1)
- 2 Timothy J. Ambrose (2)
- 3 Virginia S. Anderson/John Harvey #
- 4 Kathleen W. Free (2)
- 5 Randy E. Hunt (1)
- 6 Walter S. Jackson #
- 7 Jeannette C. Nunnelley (2)
- 8 Nancy T. Totten #
- 9 Alan Wong (2)

### INTEGRATED TECHNOLOGY

- 1 D. Bradley Burton, Chair (1)
- 2 Kathryn W. Ernstberger (2)
- 3 Dennis A. Krepes (1)
- 4 Christopher Lang (1)
- 5 Lawrence R. Mand #
- 6 Ghansham M. Manwani (1)
- 7 Patricia A. McNames (2)
- 8 Judy M. Perry (1)

### INTERNATIONAL STUDIES ADVISORY

- 1 Curtis H. Peters, Chair (1)
- 2 Maria A. Aronne (2)
- 3 Benjamin Asare (2)
- 4 Deborah G. Finkel #
- 5 Carolyn L. Kraft (2)
- 6 Judy M. Perry (2)
- 7 Barbara C. Thompson (2)
- 8 Jerry E. Wheat (2)

### LIBRARY COMMITTEE

- 1 Deborah G. Finkel, Chair (2)
- 2 Robert C. Ash (3)
- 3 B. Jane Hollowell (1)
- 4 Randy E. Hunt (3)
- 5 C. Martin Rosen #
- 6 Barbara C. Thompson (2)
- 7 Harry Weger, Jr. (3)
- 8 Sunnye Dickey \*
- 9 Tamra Yagle \*

### NOMINATING COMMITTEE

- 1 Chris Bjornson
- 2 Deborah G. Finkel
- 3 Jeannette C. Nunnelley

### RESEARCH AND GRANTS COMMITTEE

- 1 Douglas K. Barney, Chair (2)
- 2 Carolyn A. Babione (1)
- 3 Debra K. Clem (1)
- 4 A. Glenn Crothers (1)
- 5 Kent E. Edmonds (2)
- 6 Marian A. McKay (2)
- 7 Marcia T. Segal #  
ALTERNATES
- 1 Samantha M. Earley
- 2 Gretchen Kirchner
- 3 Jonathan A. Rakich
- 4 Diane S. Reid
- 5 Walter F. Ryan
- 6 Joseph L. Wert

### STUDENT RECRUITMENT AND RETENTION

- 1 Kevin Sue Bailey, Chair (2)
- 2 Joelyn K. Ainley #
- 3 David B. Campbell #
- 4 Brenda V. Hackett (3)
- 5 Sheryl L. Haehl #
- 6 Elaine K. Haub (1)
- 7 Miriam L. Griffith (3)
- 8 Dennis A. Krebs (2)
- 9 Patrick A. Mrozowski
- 10 James E. St. Clair (2)
- 11 William E. Sweigart (1)
- 12 Sunnye Dickey \*
- 13 Andrew Takami \*

### WOMEN AND GENDER STUDIES ADVISORY

- 1 Jacqueline A. Johnson, Chair (1)
- 2 Dagny G. Faulk (2)
- 3 Teesue H. Fields (2)
- 4 Peter R. Galvin (1)
- 5 Jacqueline C. Love (1)
- 6 Christa Zorn #

### UNIVERSITY FACULTY COUNCIL REPRESENTATIVE

Frank H. Wadsworth

# Ex-officio Members

\* Student Members

---

---

## **ADMINISTRATIVE COMMITTEES**

### **2000-2001**

---

#### **CAMPUS BUDGETARY ADVISORY GROUP**

- 1 Linda C. Gugin
- 2 Erin Graham\*
- 3 James L. Kauffman
- 4 Carolyn Kraft
- 5 Eldon L. Little
- 6 Janice S. McMahan
- 7 Mark P. Mixner
- 8 Lee L. Morganett
- 9 Roger Morris
- 10 Kathleen M. Norvell
- 11 Kimberly D. Pelle
- 12 Andrew Takami\*
- 13 David W. Taylor

#### **CAMPUS FACILITIES AND SAFETY COMMITTEE**

- 1 Mark P. Mixner, Chair
- 2 Dagny G. Faulk
- 3 Gordon O. Henry
- 4 Edward E. Frederick
- 5 Jodi E. James
- 6 Philip A. McBride
- 7 Jon C. Norman
- 8 Charles A. Singleton\*
- 9 Kimberly R. Wells
- 10 Tamra L. Yagle\*

#### **CAMPUS LIFE COMMITTEE**

- 1 Joelyn K. Ainley, Chair
- 2 Ronald J. Allman, II
- 3 Kevin Sue Bailey
- 4 Carol Bauer
- 5 Jonathan Braden\*
- 6 Deborah Dworsky
- 7 Ernie Neal
- 8 Debra Nesmith
- 9 Josh Suiter\*
- 10 Andrew Takami\*

#### **CLASSIFICATION APPEALS COMMITTEE**

- 1 John H. Newman, Chair
- 2 Sabrina Haas
- 3 Sherry Haehl
- 4 Mike Kerstiens

#### **CLASSROOM COMMITTEE**

- 1 Doug Barney, Chair
- 2 Mike Kerstiens
- 3 Tom Prebys
- 4 Tony Singleton\*
- 5 Marcia T. Segal
- 6 Vaughn Winslow

#### **COUNCIL ON EQUITY & DIVERSITY**

- 1 Barbara Thompson, Chair
- Faculty:
- 2 Michael Abernathy
  - 3 Jean E. Abshire
  - 4 Robert C. Ash
  - 5 Samantha Earley
  - 6 Emmanuel O. Otu
  - 7 Jacquelyn D. Reid
  - 8 Lillian E. Yeager
- Professional Staff:
- 9 Greg Roberts
  - 10 Wayne Brown
- Student:
- 11 Andrew Takami
- Clerical/Technical Staff:
- 12 Barbara Gelwick
  - 13 David Kaiser
  - 14 Elizabeth McMahan

#### **ENROLLMENT MANAGEMENT STEERING COMMITTEE**

- 1 Gilbert W. Atnip, Chair
- 2 Joelyn Ainley
- 3 Kevin Sue Bailey
- 4 David F. Fleming
- 5 Sheryl L. Haehl

#### **ENROLLMENT SERVICES COMMITTEE**

- 1 Sheryl L. Haehl, Chair
  - 2 Doug Denton
  - 3 Deborah Dworsky
  - 4 Erin N. Graham
  - 5 Patrick Mrozowski
  - 6 Tom Prebys
  - 7 D. Eric Schansberg
  - 8 Heidi Weber
  - 9 Mary Wilson
-

---

**ADMINISTRATIVE COMMITTEES Con't**

---

**INSTITUTIONAL ANIMAL CARE AND USE COMMITTEE**

- 1 Marcia T. Segal, Chair
- 2 Claude D. Baker
- 3 Teresa R. Forsyth
- 4 Steven Gilbert
- 5 Galen A. Renwick
- 6 Diane E. Wille
- 7 Lowell Smith (Community Representative)
- 8 Dr. William Hesse (Veterinarian)

Alternate:

- 1 Randy Hunt

**INSTITUTIONAL REVIEW BOARD**

- 1 Marcia T. Segal, Chair
- 2 James Barry
- 3 Granville King
- 4 Robin K. Morgan
- 5 Jeannette C. Nunnelley
- 6 G. Sam Sloss
- 7 Joann Frederick (Community Representative)

Alternate:

- 1 Henry Weger, Jr.

**MARKETING COMMITTEE**

- 1 David F. Fleming, Chair
- 2 Mary Anne Baker
- 3 Eugene Beckman
- 4 David Campbell
- 5 David Cobb
- 6 Kerry DeMuth  
(Schneider DeMuth Advertising Inc.)
- 7 Christy Harper
- 8 Jim Kanning
- 9 Kyle Ridout

**STUDENT COMPUTING TECHNOLOGY  
FEE ADVISORY COMMITTEE**

- 1 D. Bradley Burton, Chair
- 2 Mark P. Mixner
- 3 Thomas J. Klein
- 4 Kirk Klaphaak
- 5 C. Martin Rosen
- 6 Tamra L. Yagle\*
- 7 Ray F. Wisman

**UNIVERSITY DIVISION ADVISORY  
COMMITTEE**

- 1 A. Jay White, Chair
- 2 Gilbert W. Atnip
- 3 A. Christine Bowles
- 4 Brenda Hackett
- 5 Sherry L. Haehl
- 6 Elaine K. Haub
- 7 Andrew Takami
- 8 Joseph L. Wert

\* Student Representatives

---