



BREAKING THROUGH

THE 2007 ANNUAL REPORT TO THE COMMUNITY



INDIANA UNIVERSITY
SOUTHEAST

TABLE OF CONTENTS

- 1 Chancellor's Message: Breaking Through
- 2 A Community on the Rise
- 4 Cultivating Ideas, Growing Success
- 6 Spark!
- 8 Stepping Forward
- 10 Stirred and Shaken
- 12 Enrollment Highlights
- 13 Financials
- 14 Chancellor's Circle
- 16 Annual Gifts
- 29 About Indiana University Southeast

2006-2007 ALUMNI BOARD OF DIRECTORS

Douglas Bates, B.A. History 1989, Attorney, Stites & Harbison, PLLC

Kevin Boehnlein, President, B.A. Political Science 1997, Financial Advisor, Edward Jones

Joseph Grant, Vice President, B.G.S. 1996, Instructor, Louisville Metro Police Department

Elizabeth Johnson, B.S. Nursing 2004

Denny M. Leffler, Past President, B.S. Business 1987, Human Resource Director, Dawn Food Products, Inc.

C. Diego Morales, B.A. Communication 2004

Mark Nance, B.A. Mathematics 1995 Director, Applications Development, Papa John's International, Inc.

Michael Naville, B.A. Political Science 1973, Managing Partner, Lorch & Naville. LLC

Oneita Phillips, M.S. Education 1977

Richard Poe, Treasurer, B.A. Biology 1995, Dentist and Owner, Richard Poe Family Dentistry

Ashley Troncin, Secretary, B.S. Business 2004, M.B.A. 2007, Assistant Director, Accounting Services, IU Southeast

Jason Walter, B.S. Business 1998, Customer Service Representative, Cintas

2006-2007 UNIVERSITY OFFICERS

Sandra R. Patterson-Randles, Chancellor

Gilbert W. Atnip, Vice Chancellor for Academic Affairs

Ruth Garvey-Nix, Vice Chancellor for Student Affairs

Susan M. Griffin, Vice Chancellor for University Advancement

Lawrence W. Mand, Vice Chancellor for Information Technology and Community Engagement

Stephen J. Taksar, Vice Chancellor for Finance and Administrative Affairs

2006-2007 BOARD OF ADVISORS

Lana Aebersold, Owner, Aebersold Florist

Kevin Boehnlein, (IUS Alumni Association) Financial Advisor, Edward Jones
L. Carlene Bottorff, State Representative District 71

Robert Caesar, Owner, J.O. Endris Jewelers

William A. Cook, (Honorary Member) President, Cook Group Incorporated

Vern Eswine, President, The Marketing Company

Kevin Flanery, Vice President, National Public Affairs, Churchill Downs

Kevin Hammersmith, District Manager, Duke Energy

Edward Jerdonek, President & CEO, Lockett & Farley Architects & Engineers

Robert Kleehamer, Area President, First Harrison Bank

Jack Koetter, CEO, The Koetter Group

D. Jack Mahuron, Vice President, Washington County Community Foundation

Charles Reisert, CEO, Century 21 Realty Group-Reisert

Phyllis Eichenberger Robinson

Thomas Rohr, Superintendent, Greater Clark County Schools

Patrick A. Shoulders, (IU Trustee), Partner, Ziemer, Stayman, Weitzel & Shoulders, LLP

Robbie Valentine, President, Robbie Valentine Enterprises

Rose Wathen, Vice President, Stock Yards Bank & Trust Company

Doug York, President, Melhiser Endres Tucker CPAs, PC

BREAKING THROUGH

Teachers and scholars often speak of the learning process as leading from darkness to light. Since the word “education” comes from the Latin *educere* or “to lead forth,” this is an apt analogy. Colleges and universities exist as a force for enlightenment, sharing the light of knowledge and serving as a guiding beacon for a brighter future. A public university’s particular mission is to lead its citizens to personal and intellectual breakthroughs that better their lives and, in turn, their communities.

Even as we exercise leadership in this way, Indiana University Southeast is itself breaking through old stereotypes and evolving into the leading university in this region of the state. Our mission is to provide high-quality educational programs and services, to promote student learning, to prepare students for productive citizenship, and to contribute to the intellectual, cultural, and economic development of this region. As this report details, the 2006-07 academic year was a breakthrough year for us on all of these fronts.

The progress summarized in this report stems from the campus’s five-year strategic plan, Strategic Commitments for Growth to Distinction. Our community of faculty and staff, in partnership with key student and community leaders, has been steadily progressing through the details of seven strategic goals to achieve our vision of becoming, and being recognized as, an outstanding regional university. In fact, by early 2007 at the halfway point in the plan, we had implemented nearly three-quarters of the 212 action initiatives. This is a real breakthrough in strategic achievement!

Of course, the most significant breakthrough for IU Southeast this past year has been the approval for student housing on campus and breaking ground on the construction of our first set of residence halls, a priority expressed by our students and prospective students for more than 20 years. In the following pages, please read on for more details about the many other ways IU Southeast is breaking through: a new Honors Program, a new bachelor’s degree in Informatics, the enrollment and graduation of more minority students, the new Common Experience programming, and the adoption of a set of community core values.

As the leader of this academic institution and its remarkable community of teachers and learners, I am pleased and privileged to witness breakthroughs in thought, imagination, and creativity virtually everyday. However, I am especially proud that Indiana University Southeast is breaking through to a new future in education, research, and service to this region and to you, its citizens.

Sandra R. Patterson-Randles

Sandra R. Patterson-Randles
Chancellor of Indiana University Southeast





ON THE RISE

Imagine a dream tended for more than 20 years with only occasional progress and many setbacks. Then there's a spark of hope, a brainstorm of strategy, a flurry of preparation, and suddenly... a community is on the rise.



Breakthrough **Moment**



Junior Michael Warren, Criminal Justice Major from French Lick, Indiana

“Other students and the faculty here saw something in me that I didn't see myself. I'm a different person now. I've put that into action in my home, my church, my community.”

Such was the saga of IU Southeast and Southern Indiana's long-held dream of an on-campus housing option for students, finally achieved this year and now under construction.

President Adam Herbert's Mission Differentiation project to define the niche of each of IU's eight campuses helped set the stage for housing approvals at both IU Southeast and IU South Bend. Completed in the summer of 2005, President Herbert's team recommended the development of guidelines for the construction of housing on the regional campuses. In May of 2006, the IU Board of Trustees issued those guidelines, and the leadership team at IU Southeast set to work.

Long before, campus administrators had documented the anticipated impact of residence halls on enrollment goals and graduation rates. The campus's strategic plan included initiatives for enrollment growth over the next 10 years to achieve a target of 6,700 students. The leadership team believed that housing would be a critical element in achieving that goal for two specific reasons:

1. With a core of students living on campus, a transformation in the campus culture would begin that would strengthen student engagement, a proven element in recruiting and retaining students.
2. The perception of the campus among the community would be significantly elevated, resulting in greater interest among prospective students and their families.

This meant the plan would call for much more than simply buildings for students to live in. The goal of student housing became the development of the campus community, providing students with intentional opportunities to connect and integrate their in- and out-of-classroom learning, to understand the needs of the common good and one's role in the larger whole, and to support students' educational success by addressing their overlapping academic, personal, and social needs. Three different market research studies over seven years had validated significant student demand for housing.

Based on this research, the strategic plan, and the Trustees' guidelines, Vice Chancellor for Student Affairs Ruth Garvey-Nix and Vice Chancellor for Finance and Administration Stephen Taksar developed a comprehensive community-based proposal for residence halls, including the financing of the \$20.7 million project as a self-sustaining operation, not requiring tuition or tax dollars. To buttress the financial foundation, Chancellor Sandra Patterson-Randles secured a \$1 million anonymous gift from a local community source to support the project. Many other community leaders and the Board of Advisors expressed their full support for housing on campus.

The Trustees of Indiana University approved the proposal as written in November of 2006 and forwarded it to the Indiana Commission for Higher Education. After that review, it was shepherded through the state government approval process by Indiana State Representative William C. Cochran (D-New Albany). Eventually reviewed by the state budget director, the proposal was finally approved by Governor Mitch Daniels in April. President Herbert led the long awaited groundbreaking ceremony on campus on June 27, 2007.

In this first phase, just over 400 students will fill five buildings constructed near the IU Southeast lake. The halls are designed with a "lodge" concept; a large common space in each building will host community programs and casual interaction among residents. The \$20.7 million construction project is anticipated to have an economic impact of up to \$44 million locally. Residence halls on campus could bring an impact of nearly \$4 million annually across Southern Indiana and Metro Louisville.

The rise of the Grant Line Road campus is evident in other buildings too. The University Center is in the midst of an \$9 million expansion and renovation to become more student centered. More square footage is devoted to student use; student service offices are now clustered together to improve convenience; and more services are being offered like expanded dining options, a new coffee bar, a game room, an enlarged Commons, and an enhanced bookstore.

The University Center will also enhance its service to the community with a new conference center featuring renovated meeting rooms and improved food service. Hillside Hall, a building of business and education classrooms, was also renovated and upgraded this year, creating academic facilities fitting for the top-tier education students receive there.

The new IU Southeast softball team got its "field of dreams" thanks to generous support from the Clark-Floyd Counties Convention and Tourism Bureau and the Koetter family. Built this year and dedicated in April, the softball field is part of the Koetter Athletic Complex on Hausfeldt Lane. Widely considered among the best softball facilities in the National Association of Intercollegiate Athletics league, the final and future phase of the project will install lighting to enable night games to be played.

The tennis courts were also rebuilt this year, now upgraded to accommodate collegiate-level tournaments. The Clark-Floyd Counties Convention and Tourism Bureau also supported this effort.

With many facilities improvements underway, IU Southeast has kept "green" sensibilities in mind and embarked on a \$2 million energy savings program. Eleven different projects across campus included solar water heaters, new exterior lighting, and upgraded controls for energy management. Another five energy savings projects were specific to the University Center renovation such as roof insulation and high efficiency boilers. These improvements will result in an annual savings of nearly a quarter of a million dollars and a reduction in the campus's so-called "carbon footprint."

The 177 acres of the IU Southeast campus house more than the buildings that make up the University. They hold the hope and promise of the dream for IU Southeast to be the leading comprehensive university serving the citizens of Southern Indiana. IU Southeast is rising.



CULTIVATING IDEAS, GROWING SUCCESS

If ideas are seeds, then funding is their water and sunshine. At IU, ideas for educational innovation are as common as dandelions, but the funding can be as scarce as rain in August.



Breakthrough **Moment**



Senior Carla DeLong, Criminal Justice Major
from Clarksville, Indiana

“I learned that I like to learn! The faculty, staff, and other students here opened my eyes to what I could accomplish. I might have stayed stuck in my dead-end job, but instead I stepped out of my box and explored all the possibilities.”

Then President Myles Brand and the Board of Trustees were determined to find a way to advance undergraduate education at all eight IU campuses, and the Commitment to Excellence (CTE) fund was created. Subsidized by an additional tuition charge assessed to incoming undergraduate students, the CTE projects planted at IU Southeast over the past few years began to blossom beautifully in success this year.

Seeking to cultivate a sense of community and a common intellectual discussion on campus and in the community, a small group of faculty had the seed of an idea that became the Common Experience. In its first year, the program theme was “Citizens Making a Difference in America.”

A centerpiece of the Common Experience was the 1968 book *Coming of Age in Mississippi* by Anne Moody. The personal account of citizens taking action in the Civil Rights era was required for over 50 classes across many disciplines. Presentations by community leaders, faculty, and students also addressed the citizenship theme through topics like community activism, neighborhood associations, political campaigning, and community service.

A special Library exhibition featured documents from the Remnant Trust, one of the world’s finest collections of rare manuscripts and first editions pertaining to individual liberty and human dignity. (The Remnant Trust is housed in Jeffersonville.) Expanding on the dramatic exhibit and the citizenship theme, Southeast faculty facilitated lively discussions on the U.S. Constitution, the Bill of Rights, the Federalist Papers, Plato’s *Republic*, and Hobbes’ *Leviathan*.

Judged a success in its first year, the Common Experience will continue, with generous funding from the Caesars Foundation, by addressing the next topic of “Identity in a Multicultural World: Who Am I?” in the 2007-08 academic year.

Another idea long tended by the faculty and planted in the strategic plan was a special program aimed at the needs and interests of highly motivated students. With help from CTE, the new Honors Program broke through this year with the hiring of a director, Angela Salas, Ph.D., who came to IU Southeast from a similar program at Clarke College in Iowa. She set about the work of defining the program’s criteria and benefits and prepared to welcome the first cadre of Honors students in the fall of 2007.

Funding from CTE also nurtured a new degree program in Informatics, the study of how technology is used and the people who use it. IU became one of the first universities in the nation to develop a degree in Informatics, and Southeast is one of five IU campuses to offer it.

The Commitment to Excellence fund brought about the annual Student Conference, showcasing the blue ribbon research and creative work of Southeast students. Since its inception in 2005, participation has flourished to include 235 students presenting 146 projects. New knowledge or creativity was shared through performances, oral presentations, posters, and tabletop displays on topics as diverse as folk art in cemeteries in Southern Indiana, the impact of the Louisville/Jefferson County Metro Government merger, and the Good Friday peace agreement in Ireland. The next big idea is to expand it into a regional undergraduate conference with other universities.

2006 - 07 FACULTY HONORS



PAUL PITTMAN, PH.D., professor of business administration and director of the Graduate Program

- Frederic Bachman Lieber Memorial Award, IU’s oldest teaching award

- Faculty Colloquium on Excellence in Teaching (FACET) membership, an honor given to only one percent of IU faculty each year



LINDA GUGIN, PH.D., professor of political science, and **JAMES ST. CLAIR, M.A.**, professor of journalism

- Distinguished Research and Creativity Award for their three historical

book collaborations on Sherman Minton, Fred Vinson, and the governors of Indiana



KENNETH HARRIS, PH.D., assistant professor of management

- Distinguished Research and Creativity Award for his research on modeling the employer/employee relationship and job outcomes

ACADEMICS



SPARK!

College is more than textbooks and tests, more than faculty and grades, laboratories and the library. It's that spark you feel when you learn something new about yourself or when you move beyond your comfort zone to try something different.



Breakthrough **Moment**



Senior Kevin Sims, Secondary Education Major from Louisville, Kentucky

“A professor told me, ‘Aim high but be realistic.’ Lots of teachers think they’re going to change the world, but he helped me see that my classroom is the world where I will make a difference.”

Of course, IU Southeast offers its students hundreds of opportunities to expand their world of experience. Just as importantly, it gives the support students need to face new challenges.

For instance, a fresh approach to student leadership development was launched this year to promote student learning, involvement, and success through leadership. Three programs included the first leadership conference held in March featuring New York attorney C.L. Lindsay III, founder of the Coalition for Student and Academic Rights (CO-STAR), as the keynote speaker. Nearly 50 student participants came away on fire with the desire to lead and with more skills to do it.

The Environmental Conservation Club, the Advertising Club, and the Outdoor Adventure Club were among six new student-led organizations that took off this year, bringing the total number of student clubs on campus to 78. More than 100 students found a home in the campus chapters of four sororities and three fraternities, including the new chapter of Phi Beta Sigma, a national fraternity with historically African American membership. The English Club ignited a new writers' discussion group called "Grenadiersbury."

Twenty-one women athletes jumpstarted a Grenadier tradition this year as the inaugural IU Southeast softball team. Their explosive opening season included the 2007 KIAC conference title and senior Amanda Dispennett being named KIAC Pitcher of the Year. Both women's and men's varsity tennis teams won their conference regular season championships and their conference tournaments.

Perhaps the biggest bang of the year was the new intramural program led by Perry Brown, Southeast's first full-time fitness and intramural coordinator. Friendly (and some fiery) competitions among students, faculty, and staff included basketball, flag football, soccer, softball, wiffleball, dodgeball, volleyball, tennis, golf, PlayStation 2, and even cornhole.

Personal coaching was offered to nearly 200 students through the Mentoring Program. In a classic win/win, students benefit from customized guidance and a lasting relationship with a valuable campus connection; alumni, faculty, and staff mentors find fulfillment offering support, witnessing growth, and encouraging persistence to graduation. The Mentoring Program is open to all students.

A specialized mentoring initiative called Access to Success is targeted toward three at-risk groups: adult learners over the age of 25, minority students, and the 21st Century Scholars (Indiana's college tuition program for income-eligible 7th and 8th graders who promise to graduate from high school, refrain from drug and alcohol use, and apply for financial aid.) Thirty student peer mentors work with 60 students in the year-long program that includes an intense pre-college summer institute to ease the transition to college by raising their confidence and familiarizing them with the college environment and expectations.

In all these ways and hundreds more, IU Southeast lights the fuse of self-awareness in its students and prepares them for leadership roles far beyond campus.

2006-07 INTERCOLLEGIATE ATHLETICS TEAM RECORDS:

| SPORT | W - L |
|-------------------------|-------|
| WOMEN'S TENNIS..... | 15-4 |
| MEN'S TENNIS..... | 7-8 |
| VOLLEYBALL..... | 15-18 |
| MEN'S BASKETBALL..... | 22-10 |
| WOMEN'S BASKETBALL..... | 21-8 |
| SOFTBALL..... | 25-21 |
| BASEBALL..... | 23-24 |



STUDENTS



STEPPING FORWARD

Perhaps unexpectedly, a student body that carries a full academic load, family responsibilities, and off-campus employment still manages to step forward to serve its local community and in remarkable numbers.



Breakthrough **Moment**



Junior Courtney Pemberton, Accounting Major from New Albany, Indiana

“I learned that life is about way more than work. Getting involved in events and being encouraged by staff and faculty has helped me to become a well-rounded person.”

A grant from the Lilly Endowment funded the STARS (Southeast Teams Advancing Regional Service) program in which 10 IU Southeast students were assigned as volunteer coordinators at local non-profit organizations.

They recruited their fellow students to step up and serve with a result of 370 student volunteers contributing over 2,500 hours to these organizations:

- Big Brothers/Big Sisters of Kentuckiana
- Bliss House, Jeffersonville
- Center for Lay Ministries, Jeffersonville
- Floyd County Youth Services
- Hospice and Palliative Care of Southern Indiana
- Metro United Way, Louisville
- Providence Retirement Home, New Albany
- St. Elizabeth's/Catholic Charities, New Albany
- YMCA of Southern Indiana

IU Southeast student organizations documented 25,680 hours of community service this year to social causes and human service agencies like Goodwill, Success by 6, Angel Tree, Katrina Relief, and River Sweep. They organized one-time initiatives like food and blood drives; voter registration and poll worker training; and fundraisers for AIDS, Alzheimer's, hunger, and breast cancer. They volunteered in nursing homes, elementary schools, homeless shelters, and soup kitchens. They learned how to lead by serving.

A hot new community service developed out of the graphic design concentration in Fine Arts—the Design Center. Offering low-cost print and electronic design to local non-profit agencies, graphic arts students gain valuable experience while expanding their own portfolios. By the end of this year, the Design Center had hit its stride with 35 projects for 29 non-profit clients raising awareness and funding for historic preservation, low income housing, environmental protection, neighborhood revitalization, and other issues in this region.

Research projects conducted by IU Southeast students and faculty also benefit the community. Nursing students and faculty are leading a local public health research project related to the epidemic level of diabetes. Master's degree candidates in the School of Education conduct their research at the schools where they work and apply it directly and quickly to benefit the students and teachers of area school districts.

In turn, the local community furthers the hands-on education of IU Southeast students by offering internships. This year, 75 percent were paid positions, and 69 percent qualified for college credit toward graduation.

Of the 186 internships with area businesses, 134 resulted in job offers, illustrating the march of IU Southeast graduates into the local job market.

Another inspirational example of campus and community working hand-in-hand is the Men of Quality Initiative, a Kentuckiana group of professional men of color who met monthly on campus with male minority students. Seeking to close the “achievement gap” for underrepresented males, Men of Quality offers positive role models and mentors who address issues of careers, family, health, media influences, and money management. The meetings resulted in a new student group, The Alliance of Minority Brotherhood.

The spirit of service keeps pace on campus too. In May, about 100 students, faculty, and staff volunteers acted on their commitment to a beautiful campus at the third annual Campus Beautification Day, organized by Director of Physical Plant Robert Snip and supported by the Student Government Association.

In these and hundreds of other ways, IU Southeast and the community of Southern Indiana and Metro Louisville stand as proud partners in enriching the lives of all citizens in this region.

CORE VALUES

THE ON-CAMPUS COMMUNITY TOOK A STAND THIS YEAR BY DEFINING ITS CORE VALUES—THE GUIDING PRINCIPLES THAT DEFINE THE UNIVERSITY AND ARTICULATE WHAT IT STANDS FOR. THEY ARE:

NURTURING ENVIRONMENT:
FOSTERING A CARING CAMPUS COMMUNITY THAT HONORS DIVERSITY, INNOVATION, LOYALTY, TEAMWORK, MUTUAL RESPECT, AND FAIR PLAY.

HOLISTIC LEARNING:
PROVIDING A RICH EDUCATIONAL ENVIRONMENT OF ACADEMIC EXCELLENCE THAT EXTENDS BEYOND THE CLASSROOM AND SUPPORTS STUDENTS IN REACHING THEIR FULL POTENTIAL.

INTEGRITY:
DOING THE RIGHT THING AND BEING DIRECT IN ALL DEALINGS, BEING GOOD STEWARDS OF RESOURCES, AND PRACTICING ETHICAL BEHAVIOR IN ALL WAYS.

CONNECTEDNESS:
ENGAGING AND SUPPORTING THE MANY COMMUNITIES TO WHICH IT BELONGS AND FROM WHICH IU SOUTHEAST DRAWS ITS STRENGTH AND POTENTIAL.

COMMUNITY



STIRRED AND SHAKEN

Creativity. Expression. Insight. Debate.
A university campus is a stew of new ideas that can catch fire to inspire, enlighten, inform, and educate. Nothing stirs like the arts.



Breakthrough **Moment**



Junior Aiesha Haskins, Nursing Major
from New Albany, Indiana

“I used to be paralyzed by my shyness. Now, I’m a leader in the Student Nurses Association; I’m a mentor, and I’m involved in a committee at my church. The encouragement I received from professors and my academic counselors helped me grow into myself. Now I know what I can offer.”

In the 2006-07 season, the Paul W. Ogle Cultural and Community Center invited the community to taste something new with more than 50 events. Over 36,500 patrons accepted the invitation to hear pop stars Chuck Mangione and Curtis Stigers, the Louisville Orchestra Nightlights Series, and many faculty and student recitals. They viewed fine art in the Ronald L. Barr Gallery and reviewed student theatre productions of *Proof*, *Bus Stop*, or *Everything I Need to Know I Learned in Kindergarten*. They encountered up-and-coming performers like the 12-year-old pianist Peng Peng, violinist Caitlin Tully, and vocalist Rachel Price and experienced an opera cabaret and an international film festival.

An enthusiastic crowd of music lovers applauded classic performances by two ensembles from the world renowned Indiana University Jacobs School of Music this year when President Adam Herbert's Moveable Feast of the Arts came to campus. In October the IU Brass Choir took the stage of the Stem Concert Hall. Then in January, Jacobs' premier orchestral ensemble, the IU Philharmonic Orchestra, under the baton of Professor of Music David Efron, stirred the audience with near-perfection pieces by Stravinsky and Rachmaninoff. Chancellor Sandra Patterson-Randles hosted Jacobs School of Music Dean Gwyn Richards as part of the historic visit.

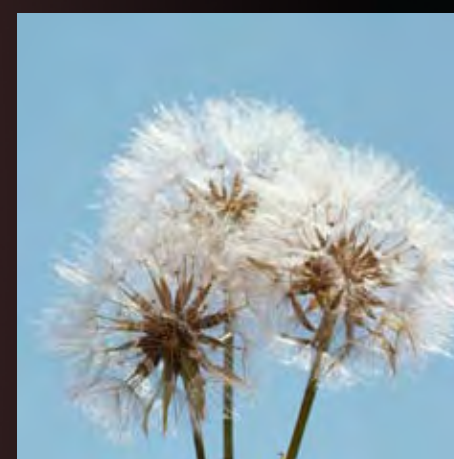
The generosity of Chase and other donors shook things up for 12,880 children and youth who experienced the performing arts at the Ogle Center, some for the very first time. The nine offerings of the Chase Children's Series, such as theatrical portrayals of Johnny Appleseed and Thomas Edison, the wheelchair dance company Dancing Wheels, and the Super Scientific Circus, resulted in a 20 percent increase in attendance from the previous year.

Two major arts groups were also hosted by the Ogle Center this year. The leadership of Professor Joanna Goldstein brought to campus 1,000 musicians for the championships of the North American Brass Band Association. The National Council on Education for the Ceramic Arts held their annual conference on campus in March.

IU Southeast faculty and alumni were featured artists in the ceramics exhibits held throughout the region, including five separate exhibits hosted by the Barr Gallery, the Ogle Center, and the IU Southeast Library. The event was spearheaded by Professor John Guenther.

Also typical of the flavorful fare offered at Southeast this year were lectures by Ambassador to the United States from the Socialist Republic of Vietnam Nguyen Tam Chien and former Middle East hostage and advisor to the Archbishop of Canterbury Terry Waite; discussions with novelists Sena Jeter Naslund, Virginia Anderson, and Mary Welp; a new Open Books discussion series at the Library; the Global Grounds coffee hour on international topics in the Adult Student Center; and Children's Hours sponsored by the Student Program Council.

If variety is the spice of life, then IU Southeast seasons the life of the mind and nourishes the spirit.



THE ARTS

ENROLLMENT HIGHLIGHTS

In keeping with the increased enrollment projections in the five-year strategic plan, IU Southeast enrollment grew slightly (.3 percent) in 2006 - 07. It was the third consecutive year of modest growth in the total number of students with a significant growth (11.8 percent) in the number of new students— the highest percentage growth in new students of any IU campus.

Of particular note is the increase in the numbers of enrolled minority and international students. Of the 990 students graduating from IU Southeast in 2006-07, 74 were minorities, a significant increase over the 59 who graduated last year.

Transfer student enrollment increased by 18 percent over the previous year. In the fall of 2005, there were 477 students enrolled from other universities compared to 563 in 2006 - 07.

Anecdotal evidence suggests transfer students from larger universities are attracted to smaller class sizes and more interaction with faculty members at IU Southeast.

Sixty-six percent of IU Southeast's 6,183 students receive some type of scholarship or financial aid. Nearly one-third (32 percent) of the scholarships IU Southeast students received were from community-based private sources. Of the \$553,000 from these off-campus sources this year, the largest private donor of scholarships was the Caesar's Foundation with a total of \$83,000. Other examples include \$60,000 of scholarships from Ford Motor Company (a benefit to their employees) and many from civic-oriented groups including local community foundations and service organizations like Tri-Kappa sorority.

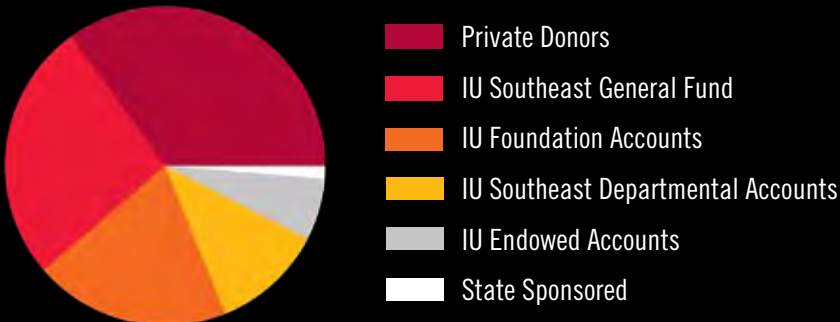
DEGREES AWARDED

| | Associate | Bachelor | Master |
|---------|-----------|----------|--------|
| 2002-03 | 140 | 606 | 196 |
| 2003-04 | 158 | 646 | 224 |
| 2004-05 | 116 | 614 | 199 |
| 2005-06 | 131 | 607 | 238 |
| 2006-07 | 125 | 668 | 197 |

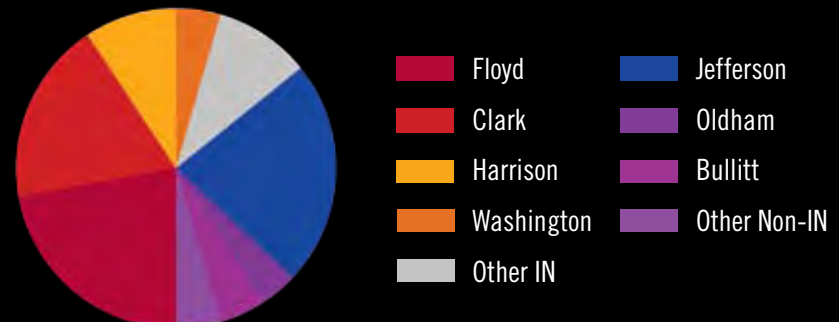
UNDERGRADUATE & GRADUATE ENROLLMENT

| | Undergraduate | Graduate |
|---------|---------------|----------|
| 2002-03 | 5860 | 889 |
| 2003-04 | 5581 | 827 |
| 2004-05 | 5419 | 819 |
| 2005-06 | 5300 | 864 |
| 2006-07 | 5365 | 818 |

SOURCES OF SCHOLARSHIP AID



UNDERGRADUATE & GRADUATE HOME COUNTY



FINANCIALS

This fiscal year was another financially sound one for IU Southeast. A \$52.8 million institutional budget is primarily made up of the \$46.8 million General Fund detailed below. (The other \$6 million consists of approximately \$3.7 million in auxiliary services, \$1.2 million in designated and restricted funds, and \$1 million in grants and contracts.) Tuition increased by an average of 5 percent this year, and actual revenues exceeded budgeted revenues by 1.2 percent.

Of note this year was the 2 percent increase IU Southeast received in its appropriation from the state, which included an equity adjustment to help bring the overall state appropriation per full-time Southeast student closer to the average allocation per student at other state universities in Indiana.

SUMMARY BY REVENUE

2006-2007

| | |
|----------------------|--------------|
| State Appropriations | \$24,454,198 |
| Student Tuition Fees | \$21,728,409 |
| Other Revenue | \$825,533 |

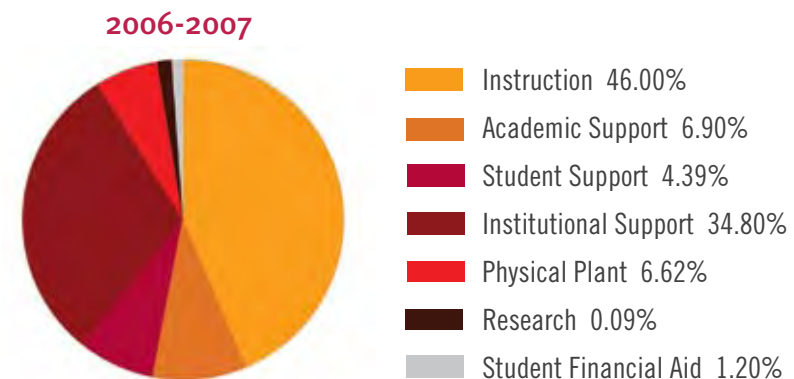
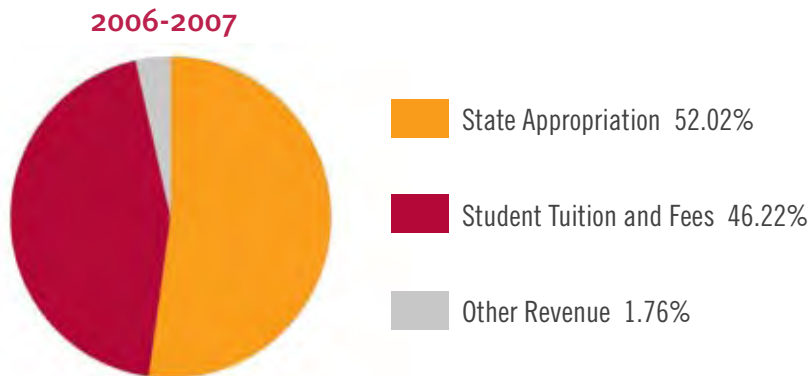
Total Revenues \$47,008,140

OPERATING EXPENDITURES BY FUNCTION

2006-2007

| | |
|-----------------------|--------------|
| Instruction | \$21,629,016 |
| Research | \$42,071 |
| Academic Support | \$3,245,043 |
| Student Support | \$2,062,431 |
| Institutional Support | \$16,358,132 |
| Physical Plant | \$3,109,657 |
| Student Financial Aid | \$561,790 |

Total Expenditures \$47,008,140



Note: Base budget as of July 1, 2006. Source: Indiana University Budget Office

ABOUT IU SOUTHEAST

IU Southeast is one of eight campuses of Indiana University. The beautiful 177-acre campus serves more than 6,200 students and more than 700 staff and faculty members. There are six schools: Arts and Letters, Business, Education, Natural Sciences, Nursing, and Social Sciences. With more than 50 degree programs, IU Southeast is one of the largest universities in the Greater Louisville Metro area.

This University was founded in 1941 as the Falls City Area Center, an extension of IU Bloomington. It operated out of Room 33 at Jeffersonville High School, and IU classes were offered in classrooms at area high schools. By 1968, the name IU Southeast was adopted. In 1973, IU Southeast moved from Jeffersonville to its present campus on Grant Line Road in New Albany.

For more information, visit www.ius.edu



CREDITS

Writer / Editor

Laure A. Morris

Design

Bob Corum

Graham Gohmann

Special Thanks

Carol Branson

Maureen Gaynor

Donna Harvey

Jim Henson

Brittany Hubbard

Michael Kerstiens

Walt Jackson

Kirk Randolph

Anne Skuce

Kristen Thompson

Erica Walsh



**INDIANA UNIVERSITY
SOUTHEAST**

4201 Grant Line Road, New Albany, IN 47150 | (812) 941-2333 | www.ius.edu